

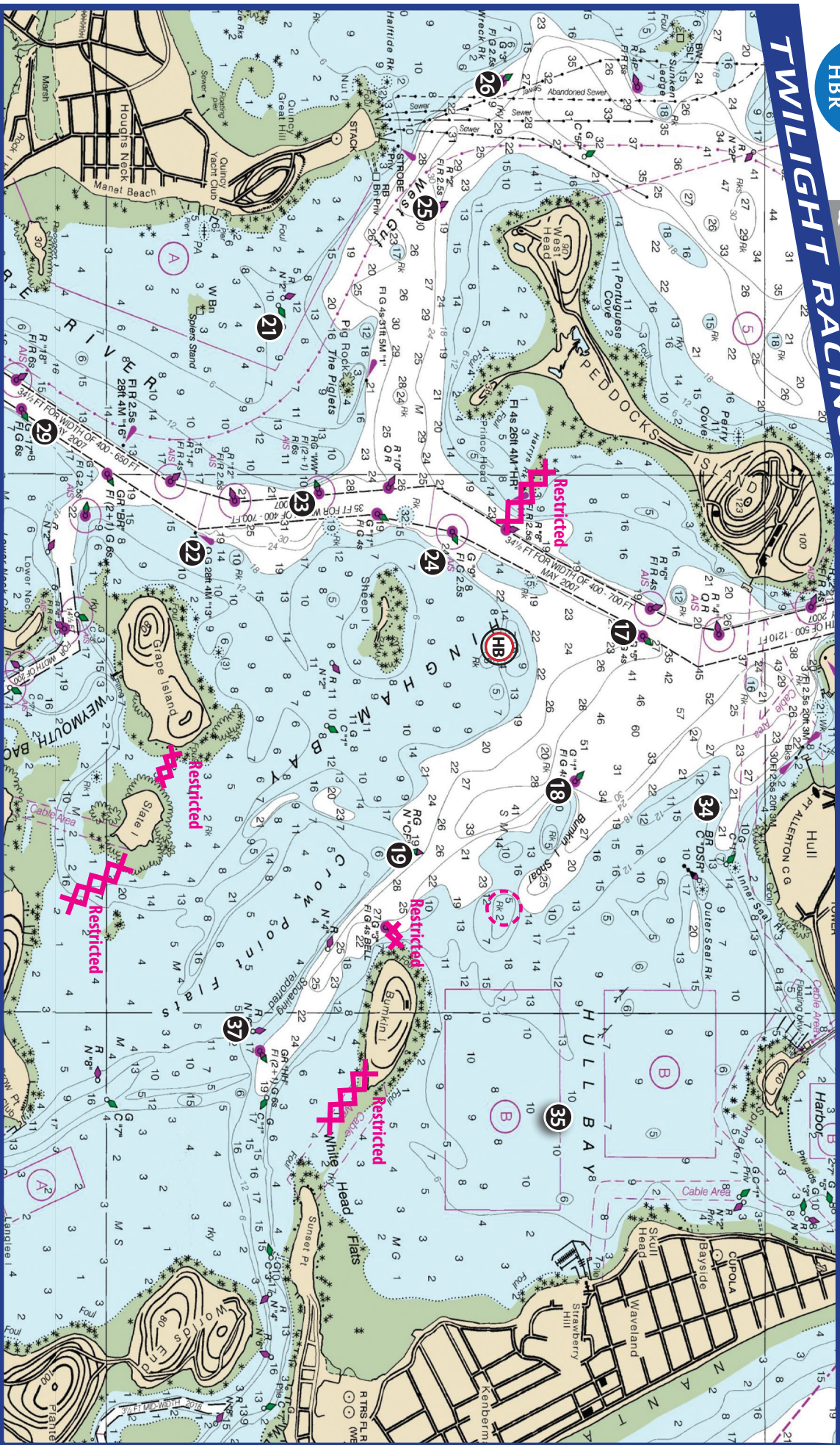


QUICK CHART

NOTE:

This chart is for MARK LOCATIONS ONLY and is not intended for determining water depth.
For accurate up-to-date soundings, please refer to your current onboard charts.

Hingham Bay Racing / 2025



HINGHAM HARBOR MARKS

HB Hingham Bay Starting Buoy (N of Sheep Is.) White "HBSP"

17	Weymouth Fore River Channel Buoy	G	"5"	FL G 4s	21	Houghs Neck Channel Buoy	G	C	"1"	—	26	Western Way Buoy (Peddocks Is.)	G	"3"	FL G 2.5s	
18	Bumkin Island (Shoal) Buoy	G	"1"	FL G 4s	22	Weymouth Fore River Channel Light			"13"	Q G	29	Weymouth Fore River Channel Buoy	G	"17"	FL G 6s	
19	Crow Point Flats Buoy (Bumkin Is.)	RG	N	"Cp"	—	23	Western Way Buoy WW	RG	"WW"	FL (2+1) R 6s	34	HB HBR Barrel (34' (S of Hull Hill))	Orange	"34"	—	
						24	Weymouth Fore River Channel Buoy	G	"g"	FL G 2.5s	35	HB HBR Barrel (35' (middle of Hull Bay))	Orange	"35"	—	
						25	Western Way Buoy (Peddocks Is.)	R	"2"	FL R 2.5s	37	Hingham Harbor Approach Buoy	R	N	"6"	—