



HBR + MBSA SOUTH RACE SCHEDULE 2024

For registration and race results, visit...
REGATTAMAN.COM

	DATE	RACE	ORGANIZER	START	Q**	TIDES [HINGHAM BAY]				SUNSET
						HIGH	FT	LOW	FT	
MAY	Wed 8	HBR SKIPPER'S MEETING + 2023 AWARDS CEREMONY	Hingham YC	1900 hrs						
	Wed 15	Spring Series - Race 1	HB Racing	1830 hrs	Δ	1828	8.5	1206	1.3	2000
	Wed 22	Spring Series - Race 2	HB Racing	1830 hrs	Δ	2339	10.2	1728	1.4	2007
	Wed 29	Spring Series - Race 3	HB Racing	1830 hrs	Δ	1655	9.2	2256	1.3	2014
JUNE	Sat 1	Circle The Lights - 22nm Race	HB Racing <i>start only</i>	1200 hrs	∞	1944	10.3	1325	0.3	2016
	Wed 5	Spring Series - Race 4	HB Racing	1830 hrs	Δ	2317	11.4	1703	0.4	2019
	Wed 12	Rumble I (Spectacle Island start)	Constitution YC	1830 hrs	∞	1655	8.8	2251	2.0	2023
	Wed 19	Spring Series - Race 5	HB Racing	1830 hrs	Δ	1018	8.5	1609	1.8	2025
	Sat 22	Solstice Regatta	HB Racing	1600 hrs	∞	1233	8.9	1823	1.2	2026
	Wed 26	Summer Series - Race 1	HB Racing	1830 hrs	Δ	1543	9.8	2143	0.7	2026
	Fri/Sat 28-29	Lambert Ocean Race (overnight)	Eastern YC	1600 hrs		1729	10.2	1110	-0.1	2026
	Sat 29	Red, White & Blue Race	Constitution YC	1900 hrs		1824	10.4	1204	0.2	2026
JULY	Wed 3	Summer Series - Race 2	HB Racing	1830 hrs	Δ	0959	9.2	1552	1.0	2026
	Wed 10	Rumble II (Yellow Nun E start)	CPYC / BHHR	1830 hrs	∞	1532	9.1	2128	1.5	2023
	Sat 13	Constitution Cup	Boston Harbor HR	1200 hrs		0515	8.8	1125	1.5	2021
	Wed 17	Summer Series - Race 3	HB Racing	1830 hrs	Δ	2058	9.6	1440	2.1	2018
	Fri/Sat 19-20	Beringer Bowl (overnight)	Boston YC	1200/1900 hrs		1032	8.4	1623	1.6	2017
	Wed 24	Summer Series - Race 4	HB Racing	1830 hrs	Δ	1431	10.3	2033	-0.1	2013
	Wed 31	Rumble III (Hospital Shoals start)	HB Racing	1815 hrs	∞	2100	10.3	0237	1.4	2006
AUGUST	Sat 3	29th Annual Make-A-Wish Regatta	CPYC	1200 hrs		1135	9.0	1722	1.2	2002
	Wed 7	Summer Series - Race 5	HB Racing	1830 hrs	Δ	1417	9.3	2015	1.1	1957
	Sat 10	Flip Flop Regatta	Courageous SC	1200 hrs		1612	9.3	0958	1.3	1953
	Sun 11	Hitchcock Trophy	Hingham YC	1200 hrs	∞	1655	9.2	1040	1.6	1952
	Wed 14	Fall Flashlight Series- Race 1	HB Racing	1815 hrs	Δ	1924	9.3	1308	2.2	1947
	Fri/Sun 16-18	Ted Hood	Storm Trysail/EYC	1200 hrs	∞	0907	8.1	1500	1.8	1944
	Wed 21	Fall Flashlight Series - Race 2	HB Racing	1815 hrs	Δ	1316	10.8	1922	-0.7	1937
	Sat 24	38th Annual JFK Regatta	Cottage Park YC	1200 hrs		1544	11.2	2202	-0.6	1932
	Wed 28	Fall Flashlight Series - Race 3	HB Racing	1815 hrs	Δ	1943	10.0	1319	1.6	1925
SEPTEMBER	Wed 4	Fall Flashlight Series - Race 4	HB Racing	1815 hrs	Δ	1307	9.6	1908	0.8	1914
	Wed 11	Fall Flashlight Series - Race 5	HB Racing	1815 hrs	Δ	1751	9.2	1138	2.3	1901
	Sat 14	Chowder Cup	HB Racing	1200 hrs	∞	0836	8.4	1433	1.6	1856
	Sat 21	31st Annual Great Chase Race	Hull YC	1300 hrs		1426	11.7	2046	-1.2	1844
OCT	Sat 5	Boston Light Race	Savin/Constitution YC	1155 hrs		1340	9.9	1957	0.6	1819

FOR MORE INFO: Geoff Roth, | geoffroydroth@gmail.com | (617) 803-8344

** QUALIFIERS: Δ Hingham Bay ∞ Hingham Bay + MBSA

FLEET SPONSORS
THANK YOU FOR YOUR SUPPORT!

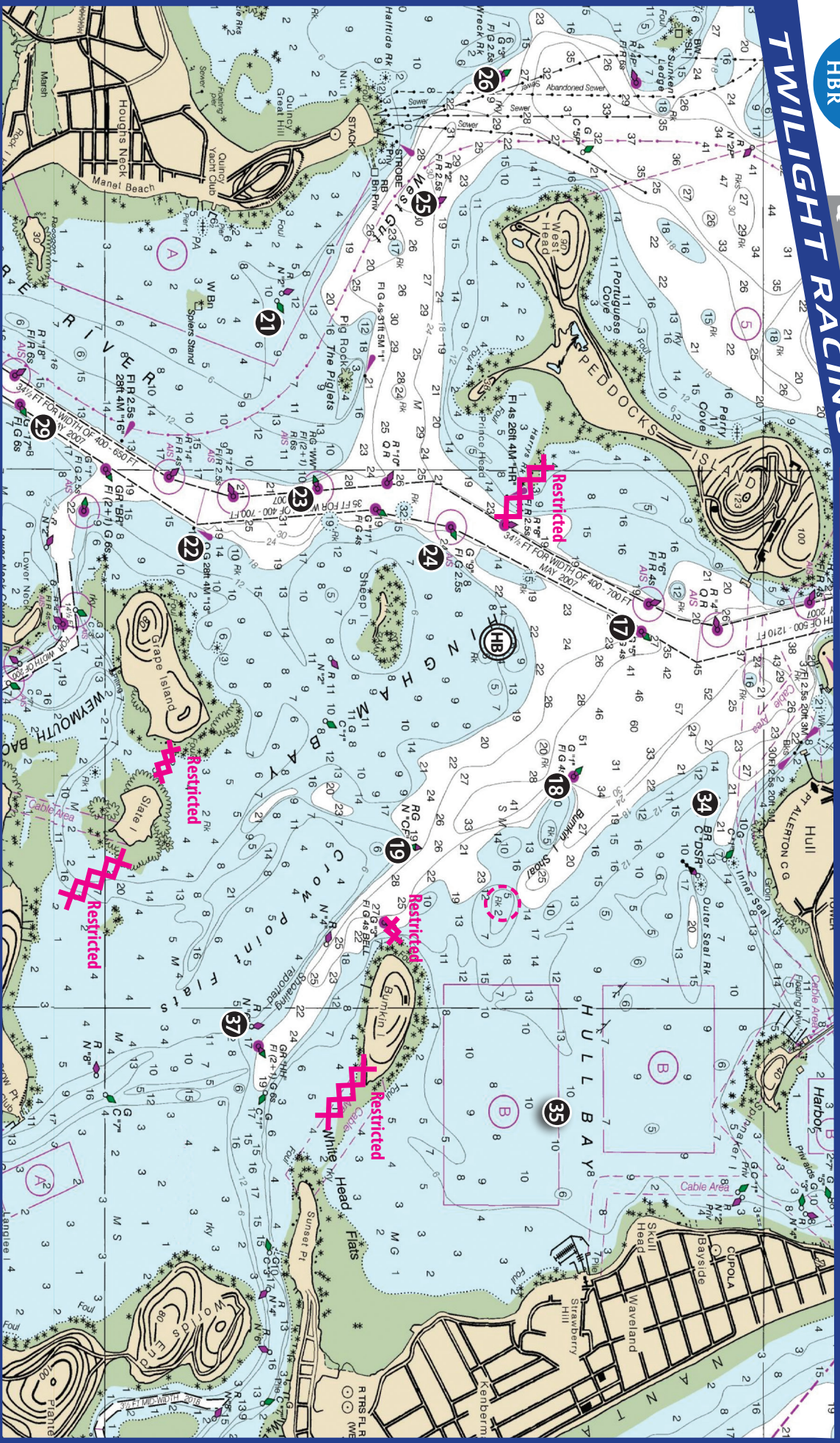




QUICK CHART

NOTE:

This chart is for MARK LOCATIONS ONLY and is not intended for determining water depth. For accurate up-to-date soundings, please refer to your current onboard charts.



HINGHAM HARBOR MARKS

HB Hingham Bay Starting Buoy (N of Sheep Is.) White "HBSB"

17	Weymouth Fore River Channel Buoy	G	"5"	FL G 4s
18	Bumkin Island (Shoal) Buoy	G	"1"	FL G 4s
19	Crow Point Flats Buoy (Bumkin Is.)	RG N	"Cp"	—
21	Houghts Neck Channel Buoy	G C	"1"	—
22	Weymouth Fore River Channel Light	"13"	OG	—
23	Western Way Buoy WW	RG	"WW" (L+1)R6s	—
24	Weymouth Fore River Channel Buoy	G	"g"	FL G 2.5s
25	Western Way Buoy (Peddocks Is.)	R	"2"	FL R 2.5s
26	Western Way Buoy (Peddocks Is.)	G	"3"	FL G 2.5s
29	Weymouth Fore River Channel Buoy	G	"17"	FL G 6s
34	HB HBR Barrel (34' (S of Hull Hill))	Orange	"34"	—
35	HB HBR Barrel (35' (middle of Hull Bay))	Orange	"35"	—
37	Hingham Harbor Approach Buoy	R N	"6"	—



WEDNESDAY TWILIGHT RACES

2024

STARTING AREA

THE STARTING AREA WILL BE EITHER:

- A.** Between the Hingham Bay Start Mark north of Sheep Island and the orange or yellow flag on the RC boat.
- OR
- B.** Between a drop mark and the orange or yellow flag on the RC boat.

The PRO has the ability to move the committee boat to a starting area of their choice based on wind conditions. This will allow the RC to set more favorable courses. If Race committee determines it needs to move the starting line, they will attempt to announce over the radio and hoist a 'Follow Me' flag.

All yachts after checking-in must keep clear of the starting area and first leg of the course until the preparatory signal for their class or face disqualification.

RC ROUNDING COLORS

GREEN - If a Green flag or placard is displayed **ALL** turning marks shall be rounded to **STARBOARD**; otherwise a green color or the letter **S** associated with a turning mark letter or number will indicate Starboard rounding for that specific mark.

RED - If a RED color, or letter **P** will indicate **PORT** rounding.

No Color Indication - all marks shall be left to **PORT**.

DROP MARKS

RC may add a windward drop mark (inflatable tetrahedron) to the course by prefacing the course number with:

WP

Windward mark to be left to **PORT**

WS

Windward mark to be left to **STARBOARD**

Competitors shall round the drop mark in the specified direction before sailing to the course's first mark.

TWICE AROUND

- Courses can be made twice around if the committee hoists the "T" flag.
- Boats Shall not be required to pass between the RC boat and the pin to begin the second lap of the course.

RACE COMMITTEE DUTIES

- Each boat will provide **3** crew members to assist the PRO over the race season.
- While performing RC duties, if your boat races, you keep your race results.
- If you don't race, you will receive an average result of the series.

Race Committee boat *Harbinger* broadcasts on:
Marine radio channel 68

For registration and race results, visit...
REGATTAMAN.COM

WEDNESDAY TWILIGHT SERIES SEQUENCE:

Your **Class Warning** — is when the flag for you class is **raised**

Your **Class Start** — is when the flag for you class is **lowered**

TIME	STARTS	PREP	HORN	FLAGS
18:30	Class Warning	for A Class	One Horn	A Flag raised
18:31			One Horn	P Flag raised
18:34			One Long Horn	P Flag lowered
18:35	1st Start: A Class	for B Class	One Horn	A Flag lowered + B Flag raised
18:36			One Horn	P Flag raised
18:39			One Long Horn	P Flag lowered
18:40	2nd Start: B Class	for C Class	One Horn	B Flag lowered + C Flag raised
18:41			One Horn	P Flag raised
18:44			One Long Horn	P Flag lowered
18:45	3rd Start: C Class		One Horn	C Flag lowered

FLEET SPONSORS

THANK YOU FOR YOUR SUPPORT!





SIGNAL FLAGS



RC Race Committee



A white/
blue



B red



C blue/
white/
red



D yellow/
blue



E blue/
red



F white/
red



G yellow/
blue



H white/
red



I yellow/
black



J blue/
white



K yellow/
blue



L yellow/
black



M blue/
white



N blue/
white



O yellow/
red



P blue/
white



Q yellow



R red/
yellow



S white/
blue



T red/
white/
blue



U red/
white



V white/
red



W blue/
white/
red



X white/
blue



Y red/
yellow



Z black/
yellow/
blue/
red



1 white/
red



2 blue/
white



3 red/
white/
blue



4 red/
white



5 yellow/
blue



6 black/
white



7 yellow/
red



8 red/
white



9 white/
black/
red/
yellow



0 yellow/
red

The raising or lowering of a flag or shape constitutes the signal; audible attention may be directed to signals as noted:



Sequence Prep Flag
CODE FLAG "P" (white square on blue)
Preparatory warning for start of next race class.



Race Postponement
ANSWERING PENNANT (vertical red and white)
and two horns or guns; lowered with horn one minute before warning signal for start of next class.



Race Abandoned
CODE FLAG "N" (blue and white checkerboard)
and three horns or guns.
All races that have started are abandoned. Return to start area.



Course Change
CODE FLAG "C" (horizontal red, white, and blue stripes)
and one horn or gun.



Follow Me
CODE FLAG "L" (black and yellow squares)
and two horns or guns. Will be displayed when Race Committee wants you to follow their boat



Shortened Course
CODE FLAG "S" (blue square on white field)
and two horns or guns
means finish between nearby mark and committee boat.



New Mark
CODE FLAG "M" (white X on blue field)
The object displaying this flag replaces a missing mark.



Twice Around
CODE FLAG "T" (vertical red, white and blue)
will be displayed by the race committee along with the course designation.
For HB Racing Twilight Races, boats shall not be required to pass between the committee boat and the pin to begin the second lap of the course.



Individual Recall
CODE FLAG "X" (blue cross on white field)
and one horn or gun. A boat is over the start line early.
Failure of the race committee to hail a boat over is not grounds for redress.
The race committee will make every effort to hail boats that are over either audible or via VHF on Channel 68.



General Recall
FIRST REPEATER (blue and yellow triangle)
and two horns or guns.
The next signal will be the preparatory signal for the class recalled.



Personal Floatation Devices (PFD) Required
CODE FLAG "Y" (yellow and red stripe)
and one horn or one gun. When flag "Y" is displayed before or with the warning signal, competitors shall wear (PFDs) or other adequate personal buoyancy throughout the race.



ABOUT US

2024

ABOUT HINGHAM BAY RACING

Hingham Bay Racing is a non-profit organization dedicated to the expansion of sailing as a sport and the support of its fundamental sportsmanship principles. Our organization values sailors and racers who demonstrate an understanding of the rules, an unwavering adherence to the concept of a competitor's self-enforced system of rules, goodwill towards all competitors, and a desire to share their experiences and skills with newcomers to the fleet.

We use the ORR-ez system which allows equitable racing between boats of different manufacture, making the fun of racing available to more than the traditional one design fleets.

Wednesday evening races are held in the protected waters of Hingham Bay and within easy reach of boats moored in Quincy Bay, Hingham Bay, and Boston Harbor. Our fleet also conducts social events such as after race parties and our year end awards dinner party.

Sailors with little to no racing experience are encouraged to participate. Contact any of our fleet captains for more information.

DISCLAIMER OF LIABILITY

Competitors that participate in all races, do so entirely AT THEIR OWN RISK (See The Racing Rules of Sailing 4, Decision to Race.). Hingham Bay Racing will not accept any liability for material damage or personal injury or death sustained in conjunction with or prior to, during, or after any sailing race (including on-shore regatta/race events).

INSURANCE

To race, each participating boat is required to be insured with valid third-party hull and adequate liability insurance.

Hingham Bay Racing, Inc.
a registered 501(c)(3) non-profit organization
P.O. Box 540, Hingham, MA 02043
www.HinghamBayRacing.org

HBR BOARD

President +Treasurer	Tom Curtis	781.706.3810	twc621@gmail.com
Secretary +MBSA President	Logan Greenlee	617.480.5597	logan.greenlee@gmail.com
Governor Emeritus	Doug Ryan	781.929.4947	doug.ryan15@gmail.com
Rules Chair	Kevin Moylan		kevinm05@gmail.com
A Fleet Captain	Geoffrey Roth	617.803.8344	geoffreydroth@gmail.com
B Fleet Captain	Dan Sullivan	781.366.7912	dhsull@hotmail.com
C Fleet Captain	Tim Manning		manningt5@gmail.com
Sport Boat Rep	Brian Cardarella		bcardarella@gmail.com
Scorer	Ted Matthews	617-312-7200	ted_matthews@icloud.com
Handicapper + ORR-EZ Sail Measurer	Andy Kurtz	339.499.8186	kurtz@bu.edu
Fleet Historian	Mike Feeley	617.347.2212	mfeeley109@gmail.com
Social Chair	Eric Kachel		ekachel@travelers.com
Member at Large	Chris Wilson	781.803.0033	candcdesign@comcast.net
Junior Delegate	Henri Richardsson		hrsailing43@gmail.com
Junior Delegate	Ted Richardsson		

FLEET SPONSORS

THANK YOU FOR YOUR SUPPORT!



STEAMBOAT WHARF MARINA



Ralph DiMatta SAILMAKERS, INC. Quincy, MA



AQUAMARINE SERVICES



THE Drift KITCHEN & DRINKS



CURTIS MANAGEMENT



NORTH SAILS



SMITH YACHT SALES



GOVERNMENT MARKS

MASS BAY LIST A: MASSACHUSETTS BAY

#	Designation	Symbol	Light	Lat N	Long W
A	Easter Point Whistle	R "2"	FL R 4s	42°34.2'	70°39.8'
B	Newcomb Ledge Whistle	G "1"	FL G 4s	42°30.5'	70°44.4'
D	Thinker's Rock Gong	GR "TR"	—	42°28.9'	70°48.9'
E	Portable Jibe/Reach Mark				
F	Portable Start/Finish Mark				
G	Great Pig Rocks Bell	R "4"	FL R 4s	42°27.6'	70°50.2'
H	Flip Rock Gong	RG "FR"		42°24.1'	70°55.5'
J	Boston Approach Buoy	RW "BG"	MO (A)W	42°23.4'	70°51.5'
K	Boston Lighted Whistle	RW "B"	MO (A)W	42°22.7'	70°47.0'
L	Boston Approach Buoy	Y "BF"	FL (4)Y 20s	42°20.7'	70°39.1'
M	Boston Entrance Whistle	RW "NC"	MO (A)W	42°22.5'	70°54.3'
N	The Graves Lighted Whistle	G "5"	FL G 4s	42°22.5'	70°51.5'
P	Boston South Entrance Can	GC "1"		42°21.9'	70°53.8'
Q	3 ½ Fathom Ledge Bell	R "2"	FL R 4s	42°21.1'	70°50.5'
R	Boston Ledge Nun	RN "6"		42°20.1'	70°51.8'
S	Thieves Ledge Whistle	G "1"	Q G	42°19.6'	70°49.8'
U	Harding Ledge Bell	G "HL"	FL G 4s	42°18.6'	70°50.6'
V	21 Foot Lighted Buoy (near Minots Ledge)	G "21"	FL G 4s	42°16.6'	70°42.4'
W	Portable Windward Mark				
X	Davis Ledge Gong	G "DL"	FL G 2.5s	42°16.3'	70°44.9'
Y	Scituate Approach Gong	RW "SA"	MO (A)W	42°12.1'	70°41.8'
Z	Farnham Rock Bell	R "6"	FL R 4s	42°05.6'	70°36.4'

MASS BAY LIST C: GREATER BOSTON + HINGHAM HARBOR

#	Designation	Symbol	Light	Lat N	Long W
1	Boston North Channel Bell (Firms Ledge)	R "2"	QR	42°22.2'	70°55.2'
2	Boston North Channel Buoy	G "5"	FL G 2.5s	42°21.4'	70°55.5'
3	President Roads Junction	GR "PR"	FL (2+1)G 6s	42°20.5'	70°56.2'
4	President Roads Anchorage Gong	Y "A"	—	42°20.6'	70°57.6'
5	President Roads Anchorage Buoy	N "E"	—	42°20.2'	70°58.8'
6	Winthrop Harbor Approach Buoy	RN "4"	—	42°21.0'	70°58.7'
7	Boston Main Channel Buoy (Castle Is.)	R "10"	FL R 6s	42°20.7'	71°00.7'
8	Boston Main Channel Buoy	"6"	FL R 2.5s	42°20.2'	70°59.9'
9	Long Island Head Buoy (President Roads)	G "17"	FL G 2.5s	42°19.9'	70°57.5'
10	Sculpin Ledge Buoy (Sculpin Ledge Channel)	RN "8A"	—	42°18.9'	70°58.9'
11	Dorchester Bay Buoy (NW of Thompson Is.)	RN "4"	—	42°19.3'	71°00.8'
12	Long Is. Shoal Nun (West Head)	RN "6"	—	42°18.4'	70°58.6'
13	Nantasket Roads Chan. Bell (Pt. Allerton)	G "3"	FL G 4s	42°19.1'	70°52.8'
14	Kelly Rock Bell (The Narrows)	R "2"	—	42°19.2'	70°54.7'
15	Nantasket Roads Chan. Lt. Buoy (N Hull Gut)	G "11"	FL G 2.5s	42°18.7'	70°55.3'
16	Rainsford Island Shoal Danger Buoy	W Orange	—	42°18.6'	70°56.7'
17	Weymouth Fore River Channel Buoy	G "5"	FL G 4s	42°17.6'	70°55.4'
18	Bumkin Island (Shoal) Buoy	G "1"	FL G 4s	42°17.4'	70°54.9'
19	Grow Point Flats Buoy (Bumkin Is.)	RN "G"	—	42°16.9'	70°54.6'
20	unused				
21	Houghts Neck Channel Buoy	GC "1"	—	42°16.5'	70°56.6'
22	Weymouth Fore River Channel Light	"13"	Q G	42°16.3'	70°55.8'
23	Western Way Buoy WW	RG "WW"	FL (2+1)R 6s	42°16.6'	70°55.9'
24	Weymouth Fore River Channel Buoy	G "9"	FL G 2.5s	42°17.1'	70°55.8'
25	Western Way Buoy (Peddocks Is.)	R "2"	FL R 2.5s	42°17.0'	70°57.0'
26	Western Way Buoy (Peddocks Is.)	G "3"	FL G 2.5s	42°17.2'	70°57.5'
27	Nahant Rock	GC "1"	—	42°24.4'	70°56.8'
28	Shag Rocks Lighted Buoy	R "2"	FL R 4s	42°24.7'	70°54.4'
29	Weymouth Fore River Channel Buoy	G "17"	FL G 6s	42°15.7'	70°56.2'
30	unused				
31	Nubble Channel Buoy	GC "1"	—	42°19.5'	70°56.8'
32	Hospital Shoal Buoy	GR "HS"	—	42°18.7'	70°56.3'
33	Nixes Mate Bell (President Roads)	G "15"	Q G	42°20.0'	70°56.7'
34	HB PHRF 34 (S of Hull Hill)	Orange "34"	—	42°17.8'	70°54.8'
35	HB PHRF 35 (middle of Hull Bay))	Orange "35"	—	42°17.5'	70°53.8'
36	unused				
37	Hingham Harbor Approach Buoy	RN "6"	—	42°16.4'	70°53.9'
38	unused				
39	unused				
HB	Hingham Bay Starting Buoy (N of Sheep Is.)	White "HBSB"	—	42°17.3'	70°55.4'

Passing or Boundary Marks (Restricted Areas)

Boats shall NOT COMPLETE PASSAGE IN EITHER DIRECTION between:

- > Castle Island and Horn/Light "5"
- > Deer Island and Deer Island Light Buoy
- > Deer Island and Great Faun Daybeacon R "6A"
- > Nixes Mate and Gallops Island
- > Boston Light and Little Galf Island
- > Toddy Rocks Can "9A" and Hull Shore
- > Rainsford Island and Quarantine Rocks
- > Harry's Rock Daybeacon R "HR" and Peddocks Island
- > Grape Island and Slate Island
- > Slate Island and Hingham Shore
- > G "3" and Bumkin Island
- > Bumkin Island and Sunset Point

ATTENTION:

There are no exceptions to the restricted areas listed to the left.

MBSA provides this list for letter designation only.

The details given are NOT FOR NAVIGATION. Please reference official U.S. Coast Guard publications for accuracy.

Note:

The area between Graves Light and Graves Whistle (G "5") is no longer restricted.

Passage under Long Island Bridge is no longer listed as restricted.