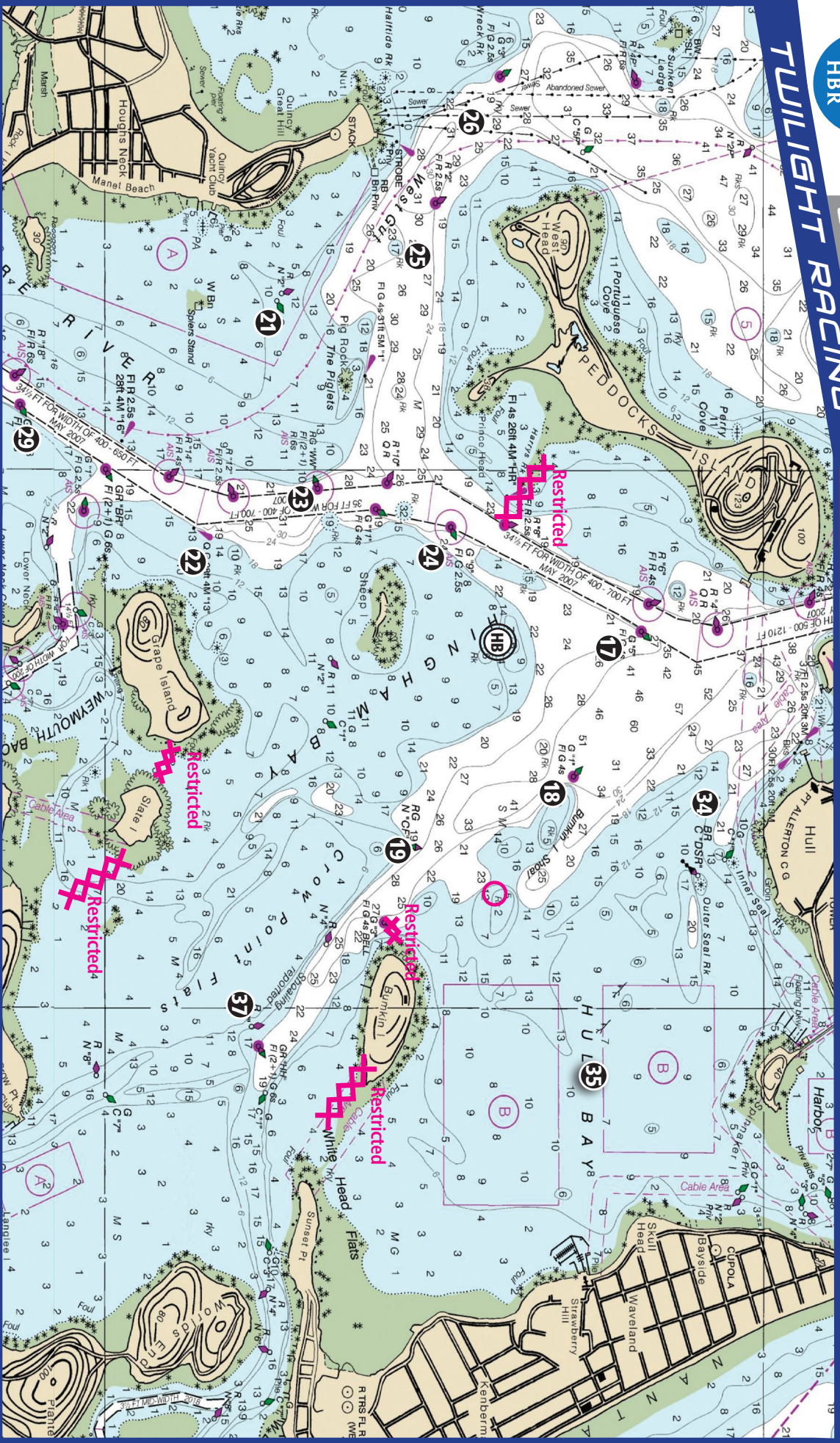




# QUICK CHART

## NOTE:

This chart is for MARK LOCATIONS ONLY and is not intended for determining water depth. For accurate up-to-date soundings, please refer to your current onboard charts.



# HINGHAM HARBOR MARKS

HB Hingham Bay Starting Buoy (N of Sheep Is.)	White "HBSB"
17 Weymouth Fore River Channel Buoy	G "5" FL G 4s
18 Bunkin Island (Shoal) Buoy	G "1" FL G 4s
19 Crow Point Flats Buoy (Bunkin Is.)	RG N "CP" —
21 Houghts Neck Channel Buoy	G C "1" —
22 Weymouth Fore River Channel Light	"13" 0 G
23 Western Way Buoy WW	RG "WW" FL (2+1) R6s
24 Weymouth Fore River Channel Buoy	G "9" FL G 2.5s
25 Western Way Buoy (Peddocks Is.)	R "2" FL R 2.5s
26 Western Way Buoy (Peddocks Is.)	G "3" FL G 2.5s
29 Weymouth Fore River Channel Buoy	G "17" FL G 6s
34 HB HBR Barrel '34' (S of Hull Hill)	Orange "34" —
35 HB HBR Barrel '35' (middle of Hull Bay)	Orange "35" —
37 Hingham Harbor Approach Buoy	R N "6" —





# HBR + MBSA SOUTH RACE SCHEDULE 2023

	DATE	RACE	ORGANIZER	START	Q**	TIDES [HINGHAM BAY]				SUNSET
						HIGH	FT	LOW	FT	
MAY	Wed. 10	HBR SKIPPER'S MEETING + 2022 AWARDS CEREMONY	Held at HULL YC	1800 hrs						1954
	Wed. 17	Spring Series Race 1	HB Racing	1830 hrs	Δ	1026	10.0	1627	-0.2	2002
	Wed. 24	Spring Series Race 2	HB Racing	1830 hrs	Δ	1552	8.6	2142	2.0	2008
	Wed. 31	Spring Series Race 3	HB Racing	1830 hrs	Δ	2128	9.8	1512	1.4	2015
JUNE	Sat. 3	Circle The Lights - 22nm Race	HB Racing	1200 hrs	∞	1131	9.3	1728	0.8	2017
	Wed. 7	Spring Series Race 4	HB Racing	1830 hrs	Δ	1452	9.6	2048	0.6	2020
	Wed. 14	Rumble I (Spectacle Island start)	Constitution YC	1830 hrs		2132	10.5	1510	0.9	2023
	Fri./Sun 16-17	Beringer Bowl (overnight)	Boston YC	1200/1900 hrs		1102	9.3	1651	1.1	2024
	Sat. 17	Solstice Regatta	HB Racing	1600 hrs	∞	1149	9.2	1737	1.2	2025
	Wed. 21	Spring Series Race 5	HB Racing	1830 hrs	Δ	1442	8.8	2030	1.7	2026
	Fri. 23-24	Lambert Overnight Ocean Race	Eastern YC	1600 hrs		1606	8.8	2200	1.9	2026
	Wed. 28	Summer Series Race 1	HB Racing	1830 hrs	Δ	1953	9.6	1337	1.6	2026
JULY	Sat. 1	Red, White & Blue Race	Constitution YC	1900 hrs		1013	8.9	1610	1.1	2026
	Wed. 5	Summer Series Race 2	HB Racing	1830 hrs	Δ	1343	9.9	1939	0.1	2025
	Wed. 12	Rumble II (Yellow Nun E start)	Boston Harbor HR	1830 hrs		2012	10.2	1348	1.1	2022
	Sat. 15	Constitution Cup	Boston Harbor HR	1200 hrs		1046	8.7	1631	1.6	2021
	Wed. 19	Summer Series Race 3	HB Racing	1830 hrs	Δ	1336	8.9	1924	1.5	2018
	Fri. 21	Rally to the Crown (South Start) (P-Town Start)	HB Racing	0700 hrs		1451	9.0	2046	1.5	2016
	Sun 23			0800 hrs		1608	9.2	2213	1.5	2015
	Wed. 26	Summer Series Race 4	HB Racing	1830 hrs	Δ	1820	9.5	1205	1.5	2012
Sat. 29	Hitchcock Trophy	Hingham YC	1200 hrs	∞	0847	8.5	1445	1.4	2009	
AUGUST	Wed. 2	Summer Series Race 5	HB Racing	1830 hrs	Δ	1229	10.1	1828	-0.2	2004
	Sat. 5	29th Annual Make-A-Wish Regatta	Boston Harbor HR	1200 hrs		1506	10.9	2112	-0.5	2001
	Wed. 9	Rumble III (Hospital Shoals start)	HB Racing	1815 hrs		1846	10.1	1224	1.1	1955
	Sat. 12	Flip Flop Regatta	Courageous SC	1200 hrs		0934	8.4	1518	1.9	1951
	Wed. 16	Fall Flashlight Series Race 1	HB Racing	1815 hrs	Δ	1230	9.0	1820	1.3	1946
	Fri./Sun. 18-20	Ted Hood		1200 hrs	∞	1341	9.3	1938	1.1	1943
	Wed. 23	Fall Flashlight Series Race 2	HB Racing	1815 hrs	Δ	1651	9.6	2315	1.2	1935
	Sat. 26	38th Annual JFK Regatta	Cottage Park YC	1200 hrs		0719	8.3	1320	1.7	1930
	Wed. 30	Fall Flashlight Series Race 3	HB Racing	1815 hrs	Δ	1132	11.6	1718	-0.2	1923
SEPTEMBER	Wed. 6	Fall Flashlight Series Race 4	HB Racing	1815 hrs	Δ	1716	10.1	2342	0.6	1911
	Sat. 9	Chowder Cup	HB Racing	1200 hrs	∞	0807	8.3	1354	2.2	1906
	Wed. 13	Fall Flashlight Series Race 5	HB Racing	1815 hrs	Δ	1130	9.9	1715	1.2	1859
	Sat. 16	30th Annual Great Chase Race	Hull YC	1300 hrs		1305	9.7	1910	0.6	1854
	Sat 23	Boston Light Race	Savin/Constitution YC	1155 hrs		1321	11.5	1938	-1.2	1827

\*\* QUALIFIERS: Δ Hingham Bay Cup ∞ Hingham Bay + MBSA

**FLEET SPONSORS**  
THANK YOU FOR YOUR SUPPORT!





# SIGNAL FLAGS



**RC** Race Committee



**A** white / blue



**B** red



**C** blue / white / blue



**D** yellow / blue / yellow



**E** blue / red / blue



**F** white / red



**G** yellow / blue / yellow



**H** white / red



**I** yellow / black



**J** blue / white



**K** yellow / blue



**L** yellow / black



**M** blue / white



**N** blue / white



**O** yellow / red



**P** blue / white



**Q** yellow



**R** red / white



**S** white / blue



**T** red / white / blue



**U** red / white



**V** white / red



**W** blue / white / red



**X** white / blue



**Y** red / yellow



**Z** black / yellow / blue / red



**1** white / red



**2** blue / white



**3** red / white / blue



**4** red / white



**5** yellow / blue



**6** black / white



**7** yellow / red



**8** red / white



**9** white / black / red / yellow



**0** yellow / red

The raising or lowering of a flag or shape constitutes the signal; audible attention may be directed to signals as noted:



**Sequence Prep Flag**

CODE FLAG "P" (white square on blue)  
Preparatory warning for start of next race class.



**Race Postponement**

ANSWERING PENNANT (vertical red and white) and two horns or guns; lowered with horn one minute before warning signal for start of next class.



**Race Abandoned**

CODE FLAG "N" (blue and white checkerboard) and three horns or guns.  
All races that have started are abandoned. Return to start area.



**Course Change**

CODE FLAG "C" (horizontal red, white, and blue stripes) and one horn or gun.



**Follow Me**

CODE FLAG "L" (black and yellow squares) and two horns or guns. Will be displayed when Race Committee wants you to follow their boat



**Shortened Course**

CODE FLAG "S" (blue square on white field) and two horns or guns  
means finish between nearby mark and committee boat.



**New Mark**

CODE FLAG "M" (white X on blue field)  
The object displaying this flag replaces a missing mark.



**Twice Around**

CODE FLAG "T" (vertical red, white and blue) will be displayed by the race committee along with the course designation. For HB Racing Twilight Races, boats shall not be required to pass between the committee boat and the pin to begin the second lap of the course.



**Individual Recall**

CODE FLAG "X" (blue cross on white field) and one horn or gun. A boat is over the start line early. Failure of the race committee to hail a boat over is not grounds for redress. The race committee will make every effort to hail boats that are over either audible or via VHF on Channel 68.



**General Recall**

FIRST REPEATER (blue and yellow triangle) and two horns or guns.  
The next signal will be the preparatory signal for the class recalled.



**Personal Floatation Devices (PFD) Required**

CODE FLAG "Y" (yellow and red stripe) and one horn or one gun. When flag Y is displayed before or with the warning signal, competitors shall wear (PFD's) or other adequate personal buoyancy throughout the race.



# WEDNESDAY TWILIGHT RACES 2023

## STARTING AREA

### THE STARTING AREA WILL BE EITHER:

- A. Between the Hingham Bay Start Mark north of Sheep Island and the orange or yellow flag on the RC boat.
- OR
- B. Between a drop mark and the orange or yellow flag on the RC boat.

The PRO has the ability to move the committee boat to a starting area of their choice based on wind conditions. This will allow the RC to set more favorable courses. If Race committee determines it needs to move the starting line, they will attempt to announce over the radio and hoist a 'Follow Me' flag.

All yachts after checking-in must keep clear of the starting area and first leg of the course until the preparatory signal for their class or face disqualification.

## RC ROUNDING COLORS

**GREEN** - If a Green flag or placard is displayed **ALL** turning marks shall be rounded to **STARBOARD**; otherwise a green color or the letter **S** associated with a turning mark letter or number will indicate Starboard rounding for that specific mark.

**RED** - If a **RED** color, or letter **P** will indicate **PORT** rounding.

**No Color Indication** - all marks shall be left to **PORT**.

## DROP MARKS

RC may add a windward drop mark (inflatable tetrahedron) to the course by prefacing the course number with:



Competitors shall round the drop mark in the specified direction before sailing to the course's first mark.

## TWICE AROUND

- Courses can be made twice around if the committee hoists the "T" flag.
- Boats Shall not be required to pass between the RC boat and the pin to begin the second lap of the course.

## RACE COMMITTEE DUTIES

- Each boat will provide **3** crew to assist the PRO over the race season.
- While performing RC duties, if your boat races, you keep your race results.
- If you don't race, you will receive an average result of the series.

Race Committee broadcasts on:

Marine radio channel **68**

## WEDNESDAY TWILIGHT SERIES REVERSE START SEQUENCE:

Your **Class Warning** —  
is when the flag for you class is **raised**

Your **Class Start** —  
is when the flag for you class is **lowered**

TIME			
18:30	<b>Warning</b>	One Horn	C Flag raised
18:31		One Horn	P Flag raised
18:34		One Long Horn	P Flag lowered
18:35	<b>1st Start: C Class</b>	One Horn	C Flag lowered + B Flag raised
18:36		One Horn	P Flag raised
18:39		One Long Horn	P Flag lowered
18:40	<b>2nd Start: B Class</b>	One Horn	B Flag lowered + A Flag raised
18:41		One Horn	P Flag raised
18:44		One Long Horn	P Flag lowered
18:45	<b>3rd Start: A Class</b>	One Horn	A Flag lowered

## FLEET SPONSORS

THANK YOU FOR YOUR SUPPORT!

