



# 2020 RACING BOOK

SAILING RULES  
RACE INSTRUCTIONS  
RACE SCHEDULE  
EVENTS



BETTER SAILING THROUGH RACING



# CONTENTS

	PAGE
PRESIDENT'S LETTER	2
ABOUT HINGHAM BAY RACING	4
2020 HINGHAM BAY RACING BOARD	5
ORR-EZ BOAT CERTIFICATION + RACE ENTRY FEES	6
HINGHAM BAY RACING CREW BANK	8
2020 HINGHAM BAY ROSTER	10
RACE COMMITTEE	14
RACE INFORMATION	16
RACE SCORING	18
ORR-EZ WIND RANGES	19
WEDNESDAY TWILIGHT RACES	20
WEEKEND RACES	21
HINGHAM BAY RACING CHART	22
HBR WED. TWILIGHT RACE COURSES	24
LIST C: GREATER BOSTON/HINGHAM	25
LIST A: MASSACHUSETTS BAY	26
HB RACING SIGNAL FLAGS	28
2019 RACE AWARDS	36
SOCIAL EVENTS	39



northsails.com

## WORLD'S BEST SERVICE

North Sails Blue Book standards and procedures guarantee the most consistent quality and repairs for all your service needs. Experience the benefits of North Certified Service™, no matter who made your sails.

### SALEM, MA

23 Glendale Street  
Salem, Massachusetts  
978 745 1400

Design: C+C DESIGN

Printing: Millennium Printing

On Our Cover: 2019 Great Chase Race (photo: Kate Richardsson)



**PRESIDENT'S  
WELCOME**

#### **FLEET MEMBER PUNCH LIST:**

- Obtain or Renew your ORR-Ez Certificate
- Register for your Hingham Bay Racing Season Pass
- Sign up for Race Committee

April 17, 2020

#### **Members of Hingham Bay Racing, Crews & Families:**

have the pleasure of knowing many in the Fleet, but for those I do not know, you may better recognize me as the skipper of Magpie. I have served Hingham Bay Racing most recently as Vice President and A-Fleet Captain. It is an honor to have been nominated by the Board to take on the role of President and I hope to serve the Fleet well during my time in this position.

As I write this letter, we are collectively sheltered in place to flatten the curve of COVID-19. For all those suffering, in any form, from this virus, our prayers are with you.

#### **With May approaching the Board of Hingham Bay Racing has determined to modify the racing season and schedule as follows:**

- May 6th Spring Meeting is cancelled.
- No races will be run prior to Memorial Day.
- From a scoring perspective, the Spring Series will be cancelled.
- Our intent is to run races as soon as it is reasonable to do so. We will follow all guidance from the Commonwealth of Massachusetts and US Coast Guard where applicable.
- Any Twilight races run prior to the beginning of the Summer Series on July 1st will be separately scored, the results of which will be acknowledged at the Fall Awards Ceremony.
  - We are considering alternate race formats in order to provide some form of racing as soon as possible, one format under consideration is a time trail with competitors taking their own start and finish time around a pre-determined course.
  - Announcements for these races, including format details, will be made with as much advance notice as possible.
- Weekend Races currently remain as scheduled, if a reschedule or cancellation becomes necessary, Hingham Bay Racing will send out an email alert to all Fleet Members at least a week in advance.

#### **Racing Disclaimer:**

- As always, per The Racing Rules of Sailing, Part 1, Section 4 – Decision to Race, the responsibility for a boat's decision to participate in a race is hers alone.

We are encouraging all Hingham Bay Fleet Members to sign up for their season membership and to renew their ORR-Ez certificate. These actions will ensure you are ready to race as soon as racing is resumed.

For any Fleet Member experiencing financial hardship due to COVID-19, please email Hingham Bay Racing Treasurer, Bob Nelson (robert.nelson@rcn.com), with a brief note to have your Membership fee waived for the season. This will be a confidential process with Bob being the only person with knowledge of your request.

Similarly, ORA and Mass Bay Sailing have teamed up to provide ORR-Ez certificate renewals at no cost to those in need of financial relief. To activate this gesture of good will: renew, do not make the payment, and send a note to Mass Bay Treasurer, Russ Chapman (russ@lwave.com). Mass Bay will then credit the charges for this season.

Further, the Board has elected not to print the 2020 Hingham Bay Race Book, but instead to make the book available online in pdf format at [www.hinghambayracing.org](http://www.hinghambayracing.org). This decision is to reduce operating costs to make up for the anticipated drop in Membership Fee revenue and keep Hingham Bay Racing solvent through the crisis.

In an effort to increase value to our advertisers we will increase advertiser exposure on our website and in future Fleet Member Communications. Any previous season advertiser who would like to continue supporting Hingham Bay Racing but is experiencing financial hardship due to COVID-19, please email Hingham Bay Racing Treasurer, Bob Nelson (robert.nelson@rcn.com), with a brief note to have your ad fee adjusted for the 2020 season.

Hingham Bay Racing is an independent organization open to all sailboats in the area. It is run by volunteer Board members who are aligned by the common goal of running fun, fair and competitive handicap sailboat races in and around Hingham Bay. Our mission for the 2020 season is to provide some form of racing for Fleet Members where possible with a return to our normal racing structure when it is appropriate to do so. Our goal for the season is not to lose any Fleet Members or Fleet Sponsors due to financial hardship.

If you have questions, or suggestions about how we can better achieve our season mission and goal, please reach out to me, your Fleet Captain or any other Board member. If you'd like to get more involved, the Board is always looking for new members!

We wish you, your families and crews good health,  
**Tom Curtis** [and the entire Hingham Bay Racing Board]  
*President, Hingham Bay Racing, 2020*  
[Twc621@gmail.com](mailto:Twc621@gmail.com)



## ABOUT HINGHAM BAY RACING

**HINGHAM BAY RACING** is an organization dedicated to the expansion of sailing as a sport and the support of it's fundamental sportsmanship principles. Our organization values sailors and racers who demonstrate an understanding of the rules, an unwavering adherence to the concept of a competitor's self-enforced system of rules, goodwill towards all competitors, and a desire to share their experiences and skills with newcomers to the fleet.

We use the ORR-ez handicap scoring system which allows equitable racing between boats of different manufacture, making the fun of racing available to all types of boats.

Hingham Bay Racing hosts Wednesday evening twilight races and weekend races throughout the sailing season for all boats interested in racing in and around Hingham Bay and Boston Harbor."

Sailors with little to no racing experience are encouraged to participate. Contact any of our fleet captains for more information.

### DISCLAIMER OF LIABILITY

Competitors that participate in all races, do so entirely **AT THEIR OWN RISK** (See The Racing Rules of Sailing 4, Decision to Race.). Hingham Bay Racing will not accept any liability for material damage or personal injury or death sustained in conjunction with or prior to, during, or after any sailing race (including on-shore regatta/race events).

### INSURANCE

Each participating boat shall be insured with valid third-party hull and adequate liability insurance.

Hingham Bay Racing P.O. Box 540, Hingham, MA 02043  
[HinghamBayRacing.org](http://HinghamBayRacing.org)

May / 2020

## 2020 HB RACING BOARD

<b>PRESIDENT</b>	Tom Curtis 781.706.3810	twc621@gmail.com
<b>PAST PRESIDENT</b>	Mike Feeley 617.347.2212	mfeeley109@gmail.com
<b>A FLEET CAPTAIN</b>	Rich Peirce 617.851.8235	rich.peirce@gmail.com
<b>B FLEET CAPTAIN</b>	Ted Matthews 617-312-7200	ted_matthews@icloud.com
<b>C FLEET CAPTAIN + SECRETARY</b>	Logan Greenlee 617.480.5597	logan@thegreenlees.us
<b>RACE COMMITTEE</b>	Geoffrey Roth 617.803.8344	gdr.linearinc@gmail.com
<b>SCORER + GOVERNOR EMERITUS</b>	Doug Ryan 781.929.4947	doug.ryan@siemens.com
<b>HANDICAPPER + ORR-EZ SAIL MEASURER</b>	Andy Kurtz 339.499.8186	kurtz@bu.edu
<b>TREASURER</b>	Bob Nelson 617.593.0951	robert.nelson@rcn.com
<b>MEMBER AT LARGE</b>	Chris Wilson 781.383.1381	candcdesign@comcast.net





# ORR-EZ BOAT CERTIFICATION + RACE ENTRY FEES

## ORR-EZ CERTIFICATE (REQUIRED)

All boats wishing to race in Hingham Bay Racing events are REQUIRED to have a yearly up-to-date official ORR-EZ certificate and rating.

ORR-EZ Certificates are payable on Regattaman.com

Skippers requiring sail measurements should contact our HBR Fleet sail measurer Andy Kurtz at kurtz@bu.edu

## RACE ENTRY FEES

» Solstice Regatta (no scheduled post-race party)	\$50
» 'Round The Lights Race	\$50
» Hitchcock Trophy	\$50
» Chowder Cup (with post-race party)	\$50
» Hingham Bay Twilight Series:	
Fran Davis Spring Series	\$60
Sullivan Summer Series	\$60
Flashlight Fall Series	\$60

All races REQUIRE a valid ORR-EZ Certificate to participate

» **SEASON'S PASS**  
**Hingham Bay Racing is offering a "Season's Pass with Certificate" \$175.00**  
**This includes:** certificate and membership to Hingham Bay Racing and covers entry fees for the four Hingham Bay ORR-EZ weekend races, the three twilight series, and all three Rumbles.

» **WEEKEND PASS**  
**Hingham Bay Racing is offering a "Weekend Pass" \$150.00**  
 This pass is for boats that wish to participate in the Hingham Bay Weekend Races: Solstice Regatta, Scorpion Bowl, Hitchcock Trophy, and Chowder Cup; and have ORR-EZ certificates. The Weekend Pass covers the entry fees for these four races.


## REGISTRATION + PAYMENTS

» **ONLINE**  
 All Hingham Bay Racing memberships, ORR-EZ certificates, season passes, and individual race entries can now be processed online through **Regattaman.com**.

» **BY MAIL**  
 Boats paying for events by mail may still send a check made out to **Hingham Bay Racing, c/o Bob Nelson, PO Box 540, Hingham, MA. 02043**

The Certificate shall be carried aboard the boat and be signed by the Owner or Person in Charge. An electronic copy of the certificate, accessed through the official certificate list on the Regattaman site, will substitute for a printed and signed certificate.

**2020 Certificate**



**YACHT NAME:** Average J  
**CLASS:** J/35  
**SAIL NUMBER:** 50X05  
**BUILDER:**  
**OWNER(S):** Ray Cercruzer

**CERTIFICATE #:** EZ10  
**ISSUE DATE:** 2019-01-28  
**VALID YEAR:** 2019  
**OFFSETS\_FILE:** us1321.off  
**CERT GROUP:** ORR-ez GULFCO

**RIG TYPE:** Sloop  
**FORESTAY:** Masthead  
**KEEL TYPE:** Fin  
**PROP TYPE:** Folding  
**PROP INSTALL:** Exposed  
**PROP BLADES:** 2  
**SPINNAKER:** Symmetrical flown with spinnaker pole  
**GENOA/JIB LEECH:** No Roach - Leech is straight  
**JIB ROLLER FURLING:** No  
**MAIN ROLLER FURLING:** -

**LOA:** 35.40 ft  
**LWL:** 30.00 ft  
**RATED LENGTH:** 30.89 ft  
**BEAM MAX:** 11.98 ft  
**DRAFT:** 6.94 ft  
**DISP EMPTY:** 10170 lbs  
**DISP SAILING:** 11998 lbs  
**CREW:** 1387 lbs  
**WATER BALLAST:** 0 lbs  
**WETTED AREA:** 270.6 ft<sup>2</sup>  
**LPS:** 114.7  
**RM20:** 841.5 ft-lbs  
**STAB INDEX:** 111  
**UPWIND SA/D:** 27.48  
**DLENGTH:** 181.6  
**DOWNWIND SA/D:** 42.11

<b>Rig Dimensions</b>	<b>Genoa Meas</b>	<b>Symmetric Spin. Meas</b>	<b>Mainsail Meas</b>
JG: 46.62 ft	LP: 22.79 ft	SL: 46.37 ft	HB: 0.56 ft
ISP: 46.78 ft	LPG %: 155.5 %	SMW: 26.46 ft	MG1: 3.12 ft
ILRH: 0 ft	JLUFF: 47.65 ft	SF: 26.46 ft	MGU: 5.43 ft
J: 14.65 ft	AREA: 542.9 ft <sup>2</sup>	AREA: 1022.6 ft <sup>2</sup>	MGL: 9.11 ft
JLRH: 0 ft			AREA: 356.6 ft <sup>2</sup>
P: 41.50 ft			
E: 14.00 ft			
SPL: 14.67 ft			

**Standard Ratings**

Closed Course	TOT (Spin)				TOT (Non-Spin)				TOT (Spin)				TOT (Non-Spin)			
	V.Light	Light	Medium	Heavy	V.Light	Light	Medium	Heavy	V.Light	Light	Medium	Heavy	V.Light	Light	Medium	Heavy
W50/L50	0.392	0.636	0.890	1.047	0.374	0.616	0.869	1.043	1489.8	924.7	668.3	561.2	1570.9	951.6	676.0	563.5
W60/L40	0.404	0.648	0.883	1.032	0.389	0.635	0.876	1.031	1485.8	924.9	679.2	581.0	1540.1	945.2	684.5	582.1
RANDOM LEG	0.407	0.646	0.864	1.011	0.387	0.618	0.839	0.869	1190.0	750.0	560.3	479.1	1251.3	782.1	577.4	488.6
<b>Point to Point</b>	TOT (Spin)				TOT (Non-Spin)				TOT (Spin)				TOT (Non-Spin)			
MOSTLY WW	0.450	0.694	0.891	0.987	0.445	0.690	0.889	0.987	1342.5	870.2	677.4	611.6	1356.6	875.4	679.8	611.6
MOSTLY LW	0.384	0.617	0.852	1.056	0.393	0.584	0.824	1.029	1246.8	775.8	562.0	453.6	1354.9	819.9	681.1	465.6

<b>Bayview MAC Custom Ratings</b>	<b>Southern California Custom Ratings</b>	<b>Southern California Custom Ratings</b>	<b>Benchmark Ratings</b>	<b>SPIN</b>	<b>Non Spin</b>
TOD TOT	TOD TOT	TOD TOT	TOD TOT	TOD TOT	TOD TOT
Shore 0.858	California Offshore Course 0.645	California Offshore Offwind Course 0.846	GPH 0.861	622.6	0.000
			IR# 0.872	617.0	0.859
				626.0	

6

7



# JOIN THE HINGHAM BAY RACING CREW BANK

Are you already an experienced crewman looking for a boat to sail on? New to racing? Want to get experience racing on a boat?...

Consider listing your name on our **Crew Bank**.

In our outreach program, we put boat owners that are not yet ready to race their own boats and non-boat owners looking to sail with experienced sailors. This will enable you get out on other boats and experience the many aspects of racing first hand with seasoned sailing racers.

- The **CREW BANK** can be found at: *HinghamBayRacing.org*
- You can also refer people to fleet captains (their contact info is on page 2)

Photo: Great Chase Race / Chris Wilson



## HB RACING IS NOW ON FACEBOOK

[www.facebook.com/hinghambayracing.org](http://www.facebook.com/hinghambayracing.org)



### A new approach to racing all types of boats together competitively!

To all of you who collectively make up Mass Bay Sailing:  
A sincere THANK YOU for helping improve the future of our sport.



# HINGHAM BAY RACING ROSTER



Photo: Great Chase Race 2018 / Kate Richardsson

Yacht Name	Sail #	Owner	Type
Alice	57	Bob Nelson	J 24
Alquemie	33867	Marc Bucklen	C&C 37
Analgesic	584	Brian McPhillips	Catalina 34-2 WK
Astray Liana	51036	Barry Ringuet	VG 30
Badfish	26	John Buckley Jr.	Impulse 26 IB
Bailamos	91	Dan Llewellyn	S2 9.1
Black Seal	143	Jeff Kent	J 35
Blixtar	21	Peter Ross	New York 40
Casuarina	75	Conrad Langenhagen	J100
Cayuga	32447	Andy Kurtz	Sabre 38
Ceann Saile	7101	Geoffrey Roth	Tartan 101
Crazy Ivan	93470	Rob Carvette	Beneteau 36.7
Cynosure	60617	Logan Greenlee	Type Rhodes 41
Dea Salacia	1925	Richard Lords	Catalina 27
Desperado	1071	Luke Leafgren	Thunderbird
Dream On	32344	Ed Littke	Catalina 38
Elan	264	Steven Johnson	Sabre 34 -2
Falcon	0	Edward Quirk	Merit 25
Got Qi	317	Matt Pike	J 105
Gotta Jibboo	32844	Ed Stack	Pearson 32
Grace	696	Michael Herde	Concordia Yawl

Yacht Name	Sail #	Owner	Type
Gusty	3060	Jim Gustafson	Catalina 30 TMBS
Halcyon	—	Michael Cousins	Catalina 34 MK1
Imagine	60135	Brian Herr	Southern Cross 39
Impromptu	6013	Ron Casciato	C&C 38-2
IMI LOA	326	Eric Perakslis	Pacific S Dana 24
Jazz	42353	Kirk Brown	J 40
Jester	52670	Kenneth Pilczak	Dehler 37
Ladylove	290	Feeley Family	J 109
Layla	3	Jay Hanks	Beneteau 361
Little Wing	99	Brian Cardarella	Seascape 24
Magpie	147	Thomas Curtis	J 100
Magic Dragon	42003	Steve DeMenna	Hinkley S W 42
Maxami	49	Len Schnabel	Frers 33
Melody	41317	Dave + Debbie Smookler	Islander 36
Moon Girl 3	139	Gerard Cody	Pearson 34
Moose	145	Rich Peirce	J 120
Mysterious Ways	1192	Steve Kavanaugh	Thunderbird
Ocean Rose	1448	Daniel White	Catalina 34
Point Breeze	1701	Rob Carvette	Catalina 34 - 2
Reflections	434	Steve Bearden	Tartan 37 -2
Rockit	1228	Kevin Grogan	Thunderbird
Rolling Stone	42	Chet Osborn	Melges 24
Ruffian	23801	Paul Pasko	J 30
Second Love	5301	Bill Furze	Catalina 30 TMBS
Shamrock Sensation	25279	Ralph DiMattia	Nelson Marek 40
Siena	51792	Peter Owens	Dickerson 37 AC
Static	40786	Eric Kachel + Ted Matthews	Evelyn 32 - 2
Strange Device	1240	Sean + Diane Kane	Thunderbird
Tempo	41915	Kevin Moylan	J 35
Tradewinds	363	Matt + Corrine Doyle	Catalina 320
Valkyrie	—	John Keating	Cal 39
Wild Ride	109	Robert Foley	Henderson 30
Wild Rose	63455	Mario Grieco	Soverel 33-2
Wizard	81	Douglas Ryan	J 80

\* Roster is compiled from 2019 boat registrations.



# THE SOUTH SHORE'S ONLY FULL SERVICE SAIL & RIGGING LOFT

Since 1970

Combining the Tradition of  
Old Fashioned Quality &  
Service with State-of-the-Art  
Design & Fabrication

- Custom Rigging
- Furling Systems
- Sail Repairs
- Sail Cleaning
- PHRF & Cruising Specialists
- Utilizing Today's Technology:
  - Optimizing Design for Performance or Cruising
  - Latest Sail Cloths including Composite Materials
  - Modern Production Methods including Laser Cutting to Guarantee Panel Shape



## DiMattia Sailmakers & Riggers, Inc.

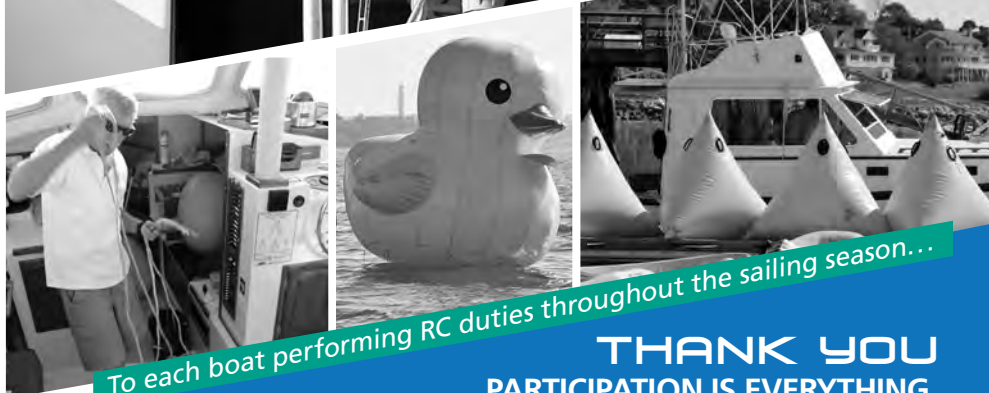
735 East Squantum Street, Quincy, MA 02171  
Phone: 617-328-1100 FAX: 617-328-1102

Visit us on the web at [www.dimattiasails.com](http://www.dimattiasails.com)





## RACE COMMITTEE



To each boat performing RC duties throughout the sailing season...

**THANK YOU**  
PARTICIPATION IS EVERYTHING.

Hingham Bay Racing uses a combination of paid Principal Race Officers (PRO) and fleet member volunteers to run races. For each race, our current PRO's Dave Curry and Bill Bradford constitute the formal Race Committee. Fleet members along with their crew, volunteer to assist the PROs with the duties of running a race at least once per season. Fleet Members who have not signed up for their Race Committee duty may be assigned to Race Committee Duty, when necessary, by the HB Race Committee Chair.

The PRO's drive the Race Committee Boat, they determine the start, they determine the course, and direct the assisting fleet members to assist keeping time, raising and lowering flags, watching the race and racers, checking boats in, and keeping times as the boats finish.

The PRO's often consult with the fleet member and crew on race course selection, so that each fleet member has an opportunity to direct a type of race it likes to see when they are out on the course. Provided the volunteer fleet member can provide both sufficient people to assist the PRO's and still wishes to have their boat race, their boat is allowed to race. But the Race Committee assignment comes first, and there will be no favoritism shown.

### RACE COMMITTEE BOAT

The Race Committee Boat is usually *Harbinger*, which is provided by Hull Yacht Club. The boat is well equipped, safe, large enough to be comfortable, and set up for quality race management.

### AWARDS

The volunteer fleet member and the crew also provide dinner and beverages for them selves and the PROs. At the end of each season, the PRO's award two season long prizes:

1. **Top Race Committee:** This goes to the fleet member and crew that perform the best race committee services.
2. **Top Chef Award:** This goes to the fleet member and crew that provide the best dinner (and beverages).

### SCHEDULE PROBLEMS

If for any reason you have difficulty fulfilling your Race Committee obligation, contact the Hingham Bay Racing Race Chair and or any available Board member as early as possible so that coverage can be arranged.

### TIMING

The fleet member and crew should arrive at the Hull Yacht Club approximately 90 minutes before the first warning, so that there is time to meet the PRO's, review the weather, prepare and provision the Race Committee Boat (this involves a launch service on a busy night and requires additional time), get the Race Committee Boat to the starting area, and assess the conditions to properly set up the Race.



## RACE INFORMATION

### ORGANIZING AUTHORITY

Races will be organized by Hingham Bay Racing, Inc. unless otherwise noted in the Sailing Instructions.

### ELIGIBILITY

Only members in good standing, paid in full before the start of racing, and those who have fulfilled all assigned obligations (including race committee) will be scored for the racing season. Eligibility must have a current 2020 ORR-EZ certificate.

### VHF RADIO COMMUNICATION

All yachts shall carry a marine transceiver capable of receiving/transmitting channels 16 and 68. All race related communications will be on Channel 68. Emergency calls only should be made to the Coast Guard on Channel 16.

### RATINGS

All boats will race under the ORR-EZ Time-on-Time rating system. The wind range selection (see page 21) will be at the sole discretion of the race committee.

### ADVERSE WEATHER CONDITIONS

Races are run in rain, cold, wind, waves, and fog. In conditions approaching adverse weather, the RC may hoist Code Flag Y requiring the use of life jackets.

As per The Racing Rules of Sailing, Part 1, Section 4 – Decision to Race, the responsibility for a boat's decision to participate in a race is hers alone. In the event that the Race Committee decides to cancel a race, announcements will be made on VHF channel 68 no earlier than 90 minutes before the scheduled First Warning. At this time the Race Committee may also send out an alert by text messages to all skippers who have registered their cell phone numbers with Regattaman.

### EQUIPMENT AND SAFETY

Each owner is responsible for providing the equipment to ensure the safety of his yacht, crew and guests, and acknowledges that responsibility by filing an application to participate in, or by participating in, any event. It is the sole responsibility of a skipper to decide whether to start or to continue in an event and to comply with applicable rules and regulations.

### FLAGS AND SIGNALS

See flags and signals on page 28 and 29.

### RULES and 'MAKE FAST'

Races will be sailed under the current Racing Rules of Sailing (USSA) as amended by these instructions. Yachts must keep clear of commercial vessels underway (including ferry boat traffic). Failure to do so is a violation of the law and will result in disqualification. Competitors are reminded that under conditions of adverse current and light air, boats may use an anchor to prevent losing ground, but are forbidden to 'make fast' to lobster pots, channel markers, permanent moorings, etc. Doing so will result in disqualification.

### RULE BEATING

Hingham Bay Racing discourages "rule beating". If a skipper modifies his boat to go faster, ORR-EZ will compensate for the faster potential speed. The use of taller masts, longer spinnaker poles, extra ballast, gutted interiors, or other modifications intended to increase speed is compensated for in the rating in order to nullify any unfair advantage. Any such changes must be reported to the Fleet Handicapper to retain a valid rating.

### CHECK-INS, CLASSES and DIVISIONS

All competing boats must check-in with the Race Committee before the first warning signal of the first class start of that race and declare whether they intend to race or cruise.

To Facilitate scoring, the Race Committee prefers you check in online at [Regattaman.com](http://Regattaman.com) prior to 5:30 pm the day of the race for Wednesday night races. Alternatly, you can Check-in can be completed by approaching the Committee Boat no sooner than 30 mins. before the scheduled warning signal.

Failure to check in may result in the boat being scored DNS. Boats that check-in online and do not come to the starting area will be scored as DNS.

All competing yachts shall display the code flag of the class in which they are competing (A, B, C, etc. see flags on page 30/31) on the stern while in the starting area and throughout the race. Failure to fly a class flag may result in the yacht being scored as not starting that race.

### RETIREMENT

Yachts retiring from a race are required to report their retirement to the Race Committee by marine radio if practical, otherwise by telephone to the sponsoring committee.

## PROTESTS

### PROTEST FORMS must be submitted within 24 hours of the finish of the race.

All boats intending to file a protest must complete a written protest on a US Sailing Protest Form.

- »Protest Forms are downloadable from [USSAILING.org](http://USSAILING.org)
- »The form needs to be scanned and emailed to the attention of the Hingham Bay Racing Board at [info@hbracing.org](mailto:info@hbracing.org)

### HEARINGS

The Hingham Bay Racing Board will convene a committee and schedule a hearing at the earliest possible date. Both parties will be notified of the date and time. Once scheduled, the hearing will not be rescheduled for the convenience of the Protestor or Protestee. The Committee will hear the protest even if only one party appears. Protests will be dismissed if neither party appears. All competitors, as part of being a member of Hingham Bay Racing, should be aware that they are expected to serve on a protest committee if asked, much like performing RC duties.

# HBR RACE SCORING

## HINGHAM BAY TWILIGHT SERIES SCORING

Each of the series trophies will be scored using a modified high point system encouraging race participation. In this scoring system you receive points for each race per the following table:

Place	Points	Place	Points
1st	102	5th	91
2nd	98	6th, 7th, 8th, ...	89
3rd	96	DNF, WD, OCS	85
4th	93	DNS, DSQ	0

- The boat with the most total points at the end of the series wins.
- A race is scored as part of a series as long as there is a start, even if no boats finish (all starters scored DNF, 85 points)
- Provided at least one boat in any fleet starts a race, all boats that do not start will be given a score of DNS (0 points) even if no other boats in their fleet start.
- The Hingham Bay Twilight series will allow one throw out per series, when four or more races are scored.
- A zero score (DNS, DSQ) may be used as a throw out for a series.

## TIES

Ties will be broken in favor of the boat with the most first places, and if the tie remains, the most second places, and so on. If this method fails to break the tie it will be broken in favor of the boat with the lowest corrected time total for all of the best 10 races for each boat that both boats competed head to head.

## RACE COMMITTEE

**You will be called upon to assist the PRO with the duties of running a race.**

In races in which a fleet member provides race committee duties that boat will be scored for that race with the average number of points for all other races in the series. Throw-outs are used in this calculation.

### EXAMPLE: a 5 Race Series

Boat A:

- finished 3rd, 7th, 1st
- was race committee for the fourth race
- went on vacation missing the last race.

Boat A would receive:

$$\begin{aligned} (96+80+102) &= 278.0 \text{ Scored Race Points} \\ \div 3 \text{ races} &= 92.6 \text{ Points for RC Duty} \\ \hline &370.6 \text{ Total Series Points} \end{aligned}$$

Allowing for the one throw-out.

The minimum score for performing as race committee is 85 points

Part of the fun and learning experience of sailboat racing is providing support necessary to run a race. Everyone who races will have an opportunity to assist the PRO in the running and management of races aboard the Hull Yacht Club's RC boat *Harbinger*.

All race result scoring is posted to...  
**REGATTAMAN.COM**

# ORR-EZ WIND RANGES

**Wind ranges** have expanded and standardized nationwide and eliminated the need for the "MBSA Custom" ratings. Here are the ORR-ez courses for 2019:

Mostly Light Wind	Random Leg*	W50 / L50	W60 / L40
10% Up Wind VMG 40% 120 50% Down Wind VMG	Equal Distance on all points of sail, Sailing in a circle	50% Up Wind VMG 50% Down Wind VMG	60% Up Wind VMG 40% Down Wind VMG

\*Random Leg may be used for "navigator" style courses where conditions warrant it

**VPP based Ratings** were developed using the following wind range probabilities (i.e., typical wind speed observed 50% of the time along with gusts above and / or lulls below the typical wind speed for a given Ratings range) The following table gives the guidelines for each wind strength category (See MBSA 2019 GSI 20.10 for more information):

Category	TWS Range	Blend		
<b>Heavy</b>	16.1 kts or Greater	25% 16kts	50% 20kts	25% 24kts
<b>Medium</b>	10 – 16 kts	25% 10kts	50% 12kts	25% 16kts
<b>Light</b>	6 – 9.9 kts	50% 6kts	25% 8kts	25% 10kts
<b>V. Light*</b>	5.9 kts or Less	100% 4kts		

\*V. Light is new for 2019 and is an optional wind range for MBSA races.



# WEDNESDAY TWILIGHT RACES

## HINGHAM BAY

PLEASE REFER TO DETAILED SAILING INSTRUCTIONS ON REGATTAMAN.COM OR AT HINGHAMBAYRACING.ORG

### STARTING AREA IS EITHER:

**A.** Between the Hingham Bay Start Mark north of Sheep Island and the orange or yellow flag on the RC boat.

**B.** Between a drop mark and the orange or yellow flag on the RC boat.

If Race committee determines it needs to move the starting line, they will attempt to announce over the radio and hoist a 'Follow Me' flag.

**Note:** All yachts after checking in must keep clear of the starting area and first leg of the course until the preparatory signal for their division or face disqualification.

### TYPICAL STARTING SEQUENCE:

Your Class Warning — is when the flag for you class is **raised**  
Your Class Start — is when the flag for you class is **lowered**

Time	Warning		
18:30		One Horn	A Class Flag raised
18:31		One Horn	P Flag raised
18:34		One Long Horn	P Flag lowered
18:35	<b>1st Start:</b> A Fleet	One Horn	A Flag lowered + B Flag raised
18:36		One Horn	P Flag raised
18:39		One Long Horn	P Flag lowered
18:40	<b>2nd Start:</b> B Fleet	One Horn	B Flag lowered + C Flag raised
18:41		One Horn	P Flag raised
18:44		One Long Horn	P Flag lowered
18:45	<b>3rd Start:</b> C Class	One Horn	C Flag lowered

### STARTING TIMES + TIME LIMITS:

Race	First Warning	Time Limit
Fran Davis Spring Series	1830	2045
Sullivan Summer Series	1830	2100
Flashlight Fall Series	1815	2045

### CLASSES:

Races shall be split into three racing fleets and one cruising fleet as shown below.

Start	Fleet Class	ORR-EZ Medium Rating
1st	A	0.841 and above
2nd	B	0.796 to 0.84
3rd	C	up to 0.795

Race Committee broadcasts on:  
Marine radio channel **68**

## RUMBLES

These rumbles are exciting interclub races that give sailors the opportunity to compete against boats they usually don't see until weekend racing. One rumble is held per series in addition to each of the regular wednesday night racing series. Please refer to Regattaman.com for SI's.

### STARTING TIMES + TIME LIMITS:

Race	First Warning
<b>RUMBLE I</b>	1830

Wed / June 24

**Rendezvous:** Northwest of Spectacle Island  
**Sponsor:** Constitution YC

Warning Signal for first class at 6:30 PM in the vicinity of G"3" QG northwest of Spectacle Island

<b>RUMBLE II</b>	1830
------------------	------

Wed / July 15

**Rendezvous:** President Roads  
**Sponsor:** Cottage Park YC

Warning Signal for first class at 6:30 PM in the vicinity of YN "E" 1 mile west of Deer Island.

<b>RUMBLE III</b>	1830
-------------------	------

Wed / August 12

**Rendezvous:** Nantasket Roads  
**Sponsor:** Hingham Bay Racing

Warning Signal for first class at 6:30 PM in the vicinity of GRC "HS" off of Hospital Shoals.

### CLASSES + DIVISIONS:

Races shall conform to the Mass Bay Splits.

# WEEKEND RACES

## HINGHAM BAY



### STARTING TIMES + TIME LIMITS:

Race	First Warning	Time Limit
<b>Solstice Regatta</b>	1600	2000 *
<b>'Round the Lights</b>	1200	2000 *
<b>Hitchcock Trophy</b>	1200	5 hours
<b>Chowder Cup</b>	1200	1700 *

\*If a yacht in your class finishes within the prescribed time, the RC shall continue to take times for an additional 1/2 hour.

### CLASSES + DIVISIONS:

The Solstice Regatta, 'Round the Lights, Hitchcock Trophy, and Chowder Cup shall conform to the Mass Bay Splits.

Be aware that multiple divisions may have a common start.

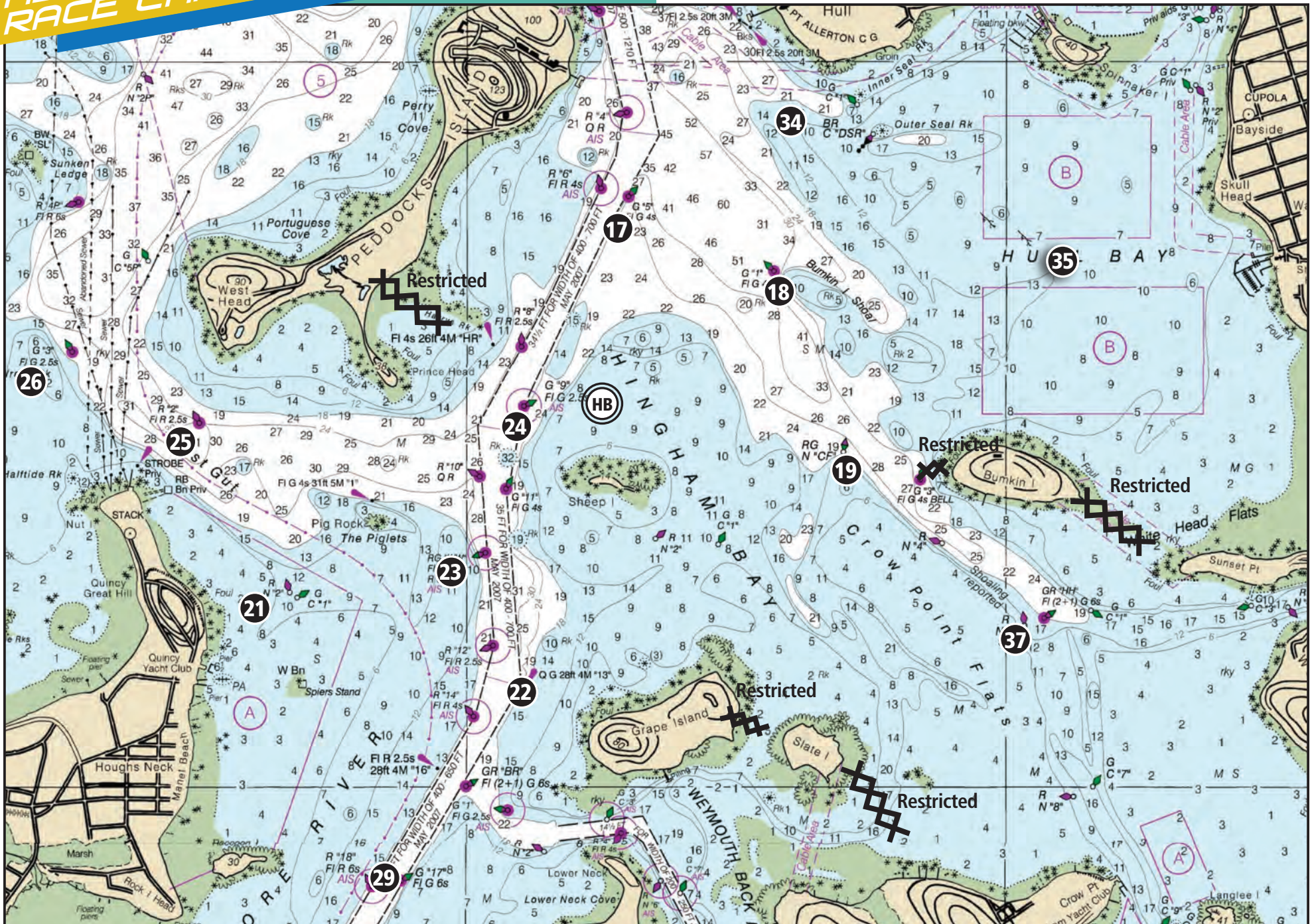
**All competitors should refer to Regattaman for the Mass Bay Sailing Association General Sailing Instructions as well as the NOR/Event Sailing Instructions for each posted event.**

Photo: Great Chase Race 2018 / Kate Richardsson



# HBR RACE CHART

**NOTE:** This chart is for mark locations ONLY and is not intended for determining water depth. For accurate up-to-date soundings, please refer to your current onboard charts.





# HBR WEDNESDAY TWILIGHT RACE COURSES

All preset courses use the Standard Gov. Marks from List C on page 28  
Please refer to the sailing instructions on [Regattaman.com](http://Regattaman.com) or on [HinghamBayRacing.org](http://HinghamBayRacing.org)

## SAILING HINGHAM BAY

Hingham Bay can be challenging because of the strong currents, high-speed ferries, shallow spots, and islands. To conquer Hingham Bay you need to know where all the marks are (get a good chart) and understand what the tide is doing (get an Eldridge book). Learning to race better in Hingham Bay will improve your strategic and tactical decision making no matter what the venue.

The prevailing wind direction in the summer is from the West/Southwest in the 10 - 20 knot range. The southwest wind direction allows for a nice first beat up into the Fore River channel. The first decision competitors must make is whether to sail to the left of Sheep Island (along the Hingham Shore) or sail to the right of Sheep Island towards the Quincy shore.

Probably the biggest factor in making this choice is the tide. On an incoming tide, the right side will usually be the better play while on an outgoing tide the left side along the Hingham shore can work, but this area is susceptible to lighter winds so be careful.

During an outgoing tide try to stay out of the deep water channel, remember that "tide runs deep", the current will be stronger in deeper water.

## SETTING OF COURSES

The PRO will now have the ability to move the committee boat to a starting area of their choice based on wind conditions. This will allow the RC to set more favorable courses. Alternatively, RC may chose to use one of these preset courses.

## DROP MARKS

RC may add a windward drop mark (inflatable tetrahedron) to a preset course by prefacing the course number with:

**WP**

Windward mark to be left to **Port**

**WS**

Windward mark to be left to **Starboard**

Competitors shall round the drop mark in the specified direction before sailing to the preset course's first mark.

## TWICE AROUND

- Courses can be made twice around if the committee hoists the "T" flag.
- Boats Shall not be required to pass between the committee boat and the pin to begin the second lap of the course.

1 NORTHWEST			2 NORTH			3 NORTHEAST			4 NORTHEAST		
A	B/C	Shorten	A	B/C	Shorten	A	B/C	Shorten	A	B/C	Shorten
HB	HB		HB	HB		HB	HB		HB	HB	
24 p	24 p		17 s	17 s		34 p	34 p		34 s	34 s	
22 s	22 s		19 s	19 s		29 p	22 p		18 p	18 p	
26 s	25 s		22 s	23 s		<b>19 p</b>	<b>19 p</b>	◀	<b>19 s</b>	<b>19 s</b>	◀
<b>22 s</b>	<b>22 s</b>	◀	<b>17 p</b>	<b>17 p</b>	◀	24 s	24 s		29 s	29 s	
<b>25 s</b>	<b>25 s</b>	◀	22 s	23 s		<b>34 s</b>	<b>34 s</b>	◀	34 s	17 s	
24 p	24 p		HB	HB		HB	HB		HB	HB	
HB	HB										
6.7	5.9		6.2	5.0		8.1	6.9		7.1	6.2	

5 SOUTHWEST			6 SOUTHWEST			7 SOUTH			8 SOUTHEAST		
A	B/C	Shorten	A	B/C	Shorten	A	B/C	Shorten	A	B/C	Shorten
HB	HB		HB	HB		HB	HB		HB	HB	
29 p	22 p		29 s	29 s		22 s	22 s		19 s	19 s	
19 p	19 p		17 p	17 p		23 p	26 s		29 s	29 s	
18 p	18 p		22 p	23 p		26 s	24 s		17 s	24 s	
<b>23 s</b>	<b>23 s</b>	◀	<b>19 p</b>	<b>19 p</b>	◀	17 s				18 s	
<b>17 s</b>	<b>17 s</b>	◀	34 p	34 p		<b>22 p</b>	<b>22 p</b>	◀	<b>19 s</b>	<b>19 s</b>	◀
HB	HB		HB	HB		HB	HB		HB	HB	
6.4	5.1		8.0	7.6		6.7	5.5		6.0	5.8	

9 SOUTHEAST			10 WEST			11 EAST			12 EAST		
A	B/C	Shorten	A	B/C	Shorten	A	B/C	Shorten	A	B/C	Shorten
HB	HB		HB	HB		HB	HB		HB	HB	
19 s	19 s		26 p	25 p		19 p	19 p		18 s	18 s	
22 s	22 s		19 p	19 p		<b>17 p</b>	<b>17 p</b>	◀	35 p	35 p	
23 p	25 s		25 p	25 p		26 p	25 p		<b>17 p</b>	<b>17 p</b>	◀
26 s			<b>19 p</b>	<b>19 p</b>	◀	19 p	19 p		25 p	23 p	
<b>17 s</b>	<b>17 s</b>	◀	24 s	24 s		HB	HB		HB	HB	
<b>19 s</b>	<b>19 s</b>	◀	HB	HB							
HB	HB										
6.9	6.1		8.4	7.7		6.2	5.6		5.1	4.2	

Photo: a foggy Wed. night race 2019



## MASS BAY LIST C: GREATER BOSTON+HINGHAM HARBOR

#	Designation	Symbol	Light	Lat N	Long W
1	Boston North Channel Bell (Finns Ledge)	R "2"	QR	42°22.2'	70°55.2'
2	Boston North Channel Buoy	G "5"	FL G 2.5s	42°21.4'	70°55.5'
3	President Roads Junction	GR "PR"	FL (2+1)G 6s	42°20.5'	70°56.2'
4	President Roads Anchorage Gong	Y "A"	—	42°20.6'	70°57.6'
5	President Roads Anchorage Bouy	N "E"	—	42°20.2'	70°58.8'
6	Winthrop Harbor Approach Bouy	R N "4"	—	42°21.0'	70°58.7'
7	Boston Main Channel Buoy (Castle Is.)	R "10"	FL R 6s	42°20.7'	71°00.7'
8	Boston Main Channel Buoy	R "6"	FL R 2.5s	42°20.2'	70°59.9'
9	Long Island Head Buoy (President Roads)	G "17"	FL G 2.5s	42°19.9'	70°57.5'
10	Sculpin Ledge Bouy (Sculpin Ledge Channel)	R N "8A"	—	42°18.9'	70°58.9'
11	Dorchester Bay Buoy (NW of Thompson Is.)	R N "4"	—	42°19.3'	71°00.8'
12	Long Is. Shoal Nun (West Head)	R N "6"	—	42°18.4'	70°58.6'
13	Nantasket Roads Chan. Bell (Pt. Allerton)	G "3"	FL G 4s	42°19.1'	70°52.8'
14	Kelly Rock Bell (The Narrows)	R "2"	—	42°19.2'	70°54.7'
15	Nantasket Roads Chan. Lt. Buoy (N Hull Gut)	G "11"	FL G 2.5s	42°18.7'	70°55.3'
16	Rainsford Island Shoal Danger Buoy	W Or	—	42°18.6'	70°56.7'
17	Weymouh Fore River Channel Buoy	G "5"	FL G 4s	42°17.6'	70°55.4'
18	Bumkin Island (Shoal) Buoy	G "1"	FL G 4s	42°17.4'	70°54.9'
19	Crow Point Flats Buoy (Bumkin Is.)	RGN "CP"	—	42°16.9'	70°54.6'
20	<i>unused</i>				
21	Houghs Neck Channel Buoy	G C "1"	—	42°16.5'	70°56.6'
22	Weymouth Fore River Channel Light	"13"	Q G	42°16.3'	70°55.8'
23	Western Way Buoy WW	RG "WW"	FL (2+1)R 6s	42°16.6'	70°55.9'
24	Weymouth Fore River Channel Buoy	G "9"	FL G 2.5s	42°17.1'	70°55.8'
25	Western Way Buoy (Peddocks Is.)	R "2"	FL R 2.5s	42°17.0'	70°57.0'
26	Western Way Buoy (Peddocks Is.)	G "3"	FL G 2.5s	42°17.2'	70°57.5'
27	Nahant Rock	G C "1"	—	42°24.4'	70°56.8'
28	Shag Rocks Lighted Buoy	R "2"	FL R 4s	42°24.7'	70°54.4'
29	Weymouth Fore River Channel Buoy	G "17"	FL G 6s	42°15.7'	70°56.2'
30	<i>unused</i>				
31	Nubble Channel Buoy	G C "1"	—	42°19.5'	70°56.8'
32	Hospital Shoal Buoy	GR C "HS"	—	42°18.7'	70°56.3'
33	Nixes Mate Bell (President Roads)	G "15"	Q G	42°20.0'	70°56.7'
34	HB PHRF '34' (S of Hull Hill)	Orange "34"	—	42°17.8'	70°54.8'
35	HB PHRF '35' (middle of Hull Bay))	Orange "35"	—	42°17.5'	70°53.8'
36	<i>unused</i>				
37	Hingham Harbor Approach Buoy	R N "6"	—	42°16.4'	70°53.9'
38	<i>unused</i>				
39	<i>unused</i>				
HB	Hingham Bay Starting Buoy (N of Sheep Is.)	White "HBSB"	—	42°17.3'	70°55.4'

## MASS BAY LIST A: MASSACHUSETTS BAY

#	Designation	Symbol	Light	Lat N	Long W
A	Easter Point Whistle	R "2"	FL R 4s	42°34.2'	70°39.8'
B	Newcomb Ledge Whistle	G "1"	FL G 4s	42°30.5'	70°44.4'
D	Tlinker's Rock Gong	GR "TR"	—	42°28.9'	70°48.9'
E	Portable Jibe/Reach Mark				
F	Portable Start/Finish Mark				
G	Great Pig Rock's Bell	R "4"	FL R 4s	42°27.6'	70°50.2'
H	Flip Rock Gong	RG "FR"		42°24.1'	70°55.5'
J	Boston Approach Buoy	RW "BG"	MO (A) W	42°23.4'	70°51.5'
K	Boston Lighted Whistle	RW "B"	MO (A) W	42°22.7'	70°47.0'
L	Boston Approach Buoy	Y "BF"	FL (4)Y 20s	42°20.7'	70°39.1'
M	Boston Entrance Whistle	RW "NC"	MO (A) W	42°22.5'	70°54.3'
N	The Graves Lighted Whistle	G "5"	FL G 4s	42°22.5'	70°51.5'
P	Boston South Entrance Can	G C "1"		42°21.9'	70°53.8'
Q	3 1/2 Fathom Ledge Bell	R "2"	FL R 4s	42°21.1'	70°50.5'
R	Boston Ledge Nun	R N "6"		42°20.1'	70°51.8'
S	Thieves Ledge Whistle	G "1"	Q G	42°19.6'	70°49.8'
U	Harding Ledge Bell	G "1HL"	FL G 4s	42°18.6'	70°50.6'
V	21 Foot Lighted Bouy (near Minots Ledge)	G "21"	FL G 4s	42°16.6'	70°42.4'
W	Portable Windward Mark				
X	Davis Ledge Gong	G "1DL"	FL G 2.5s	42°16.3'	70°44.9'
Y	Scituate Approach Gong	RW "SA"	MO (A) W	42°12.1'	70°41.8'
Z	Farnham Rock Bell	R "6"	FL R 4s	42°05.6'	70°36.4'

### Passing or Boundary Marks (Restricted Areas)

Boats shall NOT COMPLETE PASSAGE  
IN EITHER DIRECTION between:

- > Castle Island and Horn/Light "5"
- > Deer Island and Deer Island Light Buoy
- > Deer Island and Great Faun Daybeacon R "6A"
- > Nixes Mate and Gallops Island
- > Boston Light and Little Calf Island
- > Toddy Rocks Can C "9A" and Hull Shore
- > Rainsford Island and Quarantine Rocks
- > Harry's Rock Daybeacon R "HR" and Peddocks Island
- > Grape Island and Slate Island
- > Slate Island and Hingham Shore
- > G "3" and Bumpkin Island
- > Bumkin Island and Sunset Point

#### ATTENTION:

**There are no exceptions to the restricted areas listed to the left.**

MBSA provides this list for letter designation only. The details given are NOT FOR NAVIGATION. Please reference official U.S. Coast Guard publications for accuracy.

#### Note:

The area between Graves Light and Graves Whistle (G "5") is no longer restricted.

Passage under Long Island Bridge is no longer listed as restricted.



RC Race Committee



A white / blue



B red



C blue / white / red



D yellow / blue



E blue / red



F white / red



G yellow / blue



H white / red



I yellow / black



J blue / white



K yellow / blue



L yellow / black



M blue / white



N blue / white



O yellow / red



P blue / white



Q yellow



R red / yellow



S white / blue



T red / white / blue



U red / white



V white / red



W blue / white / red



X white / blue



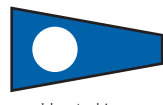
Y red / yellow



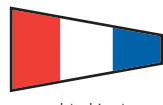
Z black / yellow / blue / red



1 white / red



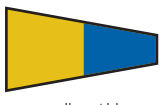
2 blue / white



3 red / white / blue



4 red / white



5 yellow / blue



6 black / white



7 yellow / red



8 red / white



9 white / black / red / yellow



0 yellow / red

The raising or lowering of a flag or shape constitutes the signal; audible attention may be directed to signals as noted:



**Sequence Prep Flag**

CODE FLAG "P" (white square on blue)  
Preparatory warning for start of next race class.



**Race Postponement**

ANSWERING PENNANT (vertical red and white)  
and two horns or guns; lowered with horn one minute before warning signal for start of next class.



**Race Abandoned**

CODE FLAG "N" (blue and white checkerboard)  
and three horns or guns.  
All races that have started are abandoned. Return to start area.



**Course Change**

CODE FLAG "C" (horizontal red, white, and blue stripes)  
and one horn or gun.



**Follow Me**

CODE FLAG "L" (black and yellow squares)  
and two horns or guns. Will be displayed when Race Committee wants you to follow their boat



**Shortened Course**

CODE FLAG "S" (blue square on white field)  
and two horns or guns  
means finish between nearby mark and committee boat.



**New Mark**

CODE FLAG "M" (white X on blue field)  
The object displaying this flag replaces a missing mark.



**Twice Around**

CODE FLAG "T" (vertical red, white and blue)  
will be displayed by the race committee along with the course designation.  
For HB Racing Twilight Races, boats shall not be required to pass between the committee boat and the pin to begin the second lap of the course.



**Individual Recall**

CODE FLAG "X" (blue cross on white field)  
and one horn or gun. A boat is over the start line early.  
Failure of the race committee to hail a boat over is not grounds for redress. The race committee will make every effort to hail boats that are over either audible or via VHF on Channel 68.



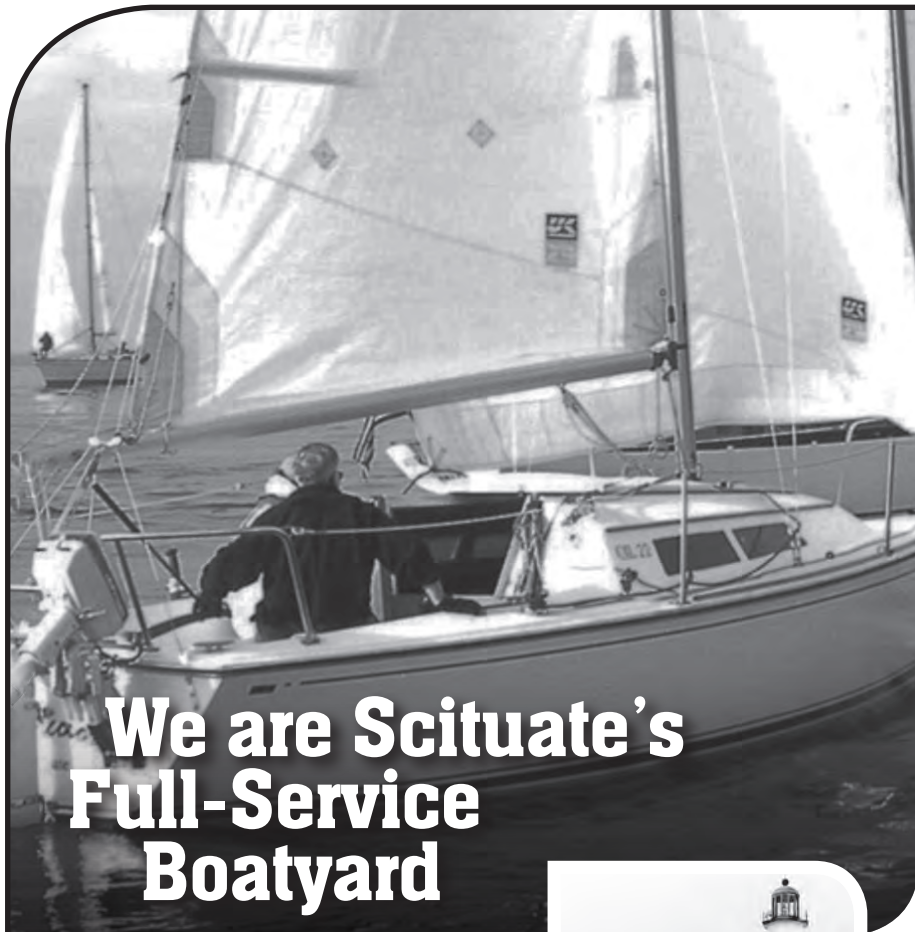
**General Recall**

FIRST REPEATER (blue and yellow triangle)  
and two horns or guns.  
The next signal will be the preparatory signal for the class recalled.



**Personal Floatation Devices (PFD) Required**

CODE FLAG "Y" (yellow and red stripe)  
and one horn or one gun. When flag Y is displayed before or with the warning signal, competitors shall wear (PFD's) or other adequate personal buoyancy throughout the race.



## We are Scituate's Full-Service Boatyard

**Scituate Boat Works** is your full-service boatyard and winter storage source. We are committed to serving our customers in the best possible way. We strive to make your boating season enjoyable and hassle-free.



OFFICIAL SERVICE/PARTS DEALER



**781-545-0487**  
**ScituateBoatWorks.com**

119 Edward Foster Road, Scituate, MA 02066

*~ A Proud 2019 Sponsor of Hingham Bay Racing ~*



# Richdale FOOD SHOPS

Proudly serving you since 1960

**Now open on the South Shore**  
Come visit our new locations

**180**  
**South Street**  
**Hingham**    **&**    **185**  
**Lincoln Street**  
**Hingham**



**Join. Support.**

Phone: 1-401-683-0800

Toll free: 1-800-877-2451

E-Mail: [info@ussailing.org](mailto:info@ussailing.org)

[www.ussailing.org](http://www.ussailing.org)





# Foster Rigging & Yacht Service Inc.

*"From Masthead to Keel"*

**Wally Foster**, President

7 Read Avenue Quincy, MA 02169

Phone: 617.773.9800 FAX: 617.773.9899 Email: fosrig@shore.net

## WALTER J. MAY INSURANCE AGENCY, INC.

CONTACT: **Larry May**

188 Whiting Street, Hingham, MA 02043

(781) 749-4310 [www.waltermayinsurance.com](http://www.waltermayinsurance.com)

HOME • AUTO • BUSINESS • MARINE • And more

PROUDLY REPRESENTING  **MAPFRE | INSURANCE**

## MONAHANS' MARINE INC.

396 Washington St. (Rt.53) Weymouth, MA 02188

Rt. 3 to exit 16 (Rt.18 N) to Rt. 53N

781-335-2746

[www.monahansmarine.com](http://www.monahansmarine.com)



**SOUTH SHORE BOATING HEADQUARTERS**



# CURTIS MANAGEMENT



Since 1979, Curtis Management continues to provide property management, development and leasing services to the South Shore's commercial and residential clients.

Call us to learn about our available space and let us be a part of your businesses story!

~  
*Curtis Management is a proud supporter of Hingham Bay Racing.*

For Property Management or Leasing Information  
781.749.7033 | [info@curtismgt.com](mailto:info@curtismgt.com)

MENTION THIS AD  
& RECEIVE  
10% OFF!



**Captain John**  
Marine Surveyors

- Purchase & Insurance Surveys, Damage Assessment
- Finance, Donation & Estate Appraisals
- US Coast Guard Captain License
- ABYC Standards Certified
- Over 20 Years Experience
- Covering all of New England, Cape Cod & the Islands

**John Reichardt, Owner** SAMS Accredited Marine Surveyor  
AMS #952 Specialty: Yachts, Small Craft

508.813.4053

www.CaptainJohnMarineSurveyors.com



## SMITH YACHT SALES

24 Shipyard Drive, Unit 204  
Hingham, MA 02043  
t: 781.749.9989  
f: 781.749.9920  
[www.smithyacht.com](http://www.smithyacht.com)

**Dan McCarthy** c: 781.242.9527 e: [danny@smithyacht.com](mailto:danny@smithyacht.com)



**Albury Brothers Boats**



## BLUE WATER LAW GROUP



**ROBERT NELSON, Esq.**

(617) 593-0951 • [bobnelson@bluewaterlawgroup.com](mailto:bobnelson@bluewaterlawgroup.com)



## MCCANN'S MARINE SERVICE

*Complete Marine Service Center*

275 River Street  
N. Weymouth, MA 02191

**Hugh McCann**  
781.337.1866



**VOLVO  
PENTA**

2019

# RACE AWARDS

## WEDNESDAY TWILIGHT RACING

### Fran Davis Spring Series

- A Fleet**  
1 Ladylove  
2 Casuarina  
3 Magpie

- B Fleet**  
1 Impromptu  
2 Static  
3 Rapparee

- C Fleet**  
1 Falcon  
2 Melody  
3 Cynosure

### Sullivan Summer Series

- A Fleet**  
1 Casuarina  
2 Ladylove  
3 Magpie

- B Fleet**  
1 Impromptu  
2 Rapparee  
3 Static

- C Fleet**  
1 Melody  
2 Gusty  
3 Falcon

### Flashlight Fall Series

- A Fleet**  
1 Ladylove  
2 Casuarina  
3 Magpie

- B Fleet**  
1 Impromptu  
2 Melody  
3 Alquemie

- C Fleet**  
1 Falcon  
2 Gusty  
3 Cynosure

## HINGHAM BAY CUP

Awarded to the boat with the highest 10 race total points for the HB Racing Wednesday Twilight series of races.

- A Fleet**  
1 Ladylove  
2 Casuarina  
3 Magpie

- B Fleet**  
1 Impromptu  
2 Static  
3 Rapparee

- C Fleet**  
1 Falcon  
2 Cynosure  
3 —

## RUMBLES INTER-CLUB RACES

### Rumble I

- A Fleet**  
1 Scherherazade  
2 Pressure Drop  
3 Moose

- B Fleet**  
1 Dopodamani  
2 Wild Thing  
3 Agora

- C Fleet**  
1 Sparkle Pony  
2 Churchkey  
3 Tonga

- D Fleet**  
1 Iassair  
2 Ophelia  
3 —

- F Fleet**  
1 Alquemie  
2 Rapparee  
3 Bailamos

- G Fleet**  
1 Cynosure  
2 Falcon  
3 Morris the Cat

### Rumble II

- A Fleet**  
1 Scherherazade  
2 Pressure Drop  
3 Wild Ride

- B Fleet**  
1 Dopodamani  
2 Rocklt 2.0  
3 Wild Thing

- C Fleet**  
1 Sparkle Pony  
2 Wizard  
3 Alquemie

- D Fleet**  
1 Ophelia  
2 Gotta Jibboo  
3 —

- F Fleet**  
1 —  
2 —  
3 —

- G Fleet**  
1 —  
2 —  
3 —

### Rumble III

- A Fleet**  
1 —  
2 —  
3 —

- B Fleet**  
1 Casuarina  
2 Rocklt 2.0  
3 Agora

- C Fleet**  
1 Tonga  
2 Sparkle Pony  
3 Churchkey

- D Fleet**  
1 Ophelia  
2 Gotta Jibboo  
3 —

- F Fleet**  
1 —  
2 —  
3 —

- G Fleet**  
1 —  
2 —  
3 —

## WEEKEND RACING

### Solstice Regatta

- A Fleet**  
1 Pressure Drop  
2 Wild Ride  
3 Moose

- B Fleet**  
1 Dopodamani  
2 Wild Thing  
3 Uproar

- C Fleet**  
1 Tonga  
2 Static  
3 Gotta Jibboo

- D Fleet**  
1 Mysterious Ways  
2 Dea Salacia  
3 —

- F Fleet**  
1 Mashnee  
2 Summerin  
3 —

- G Fleet**  
1 Cynosure  
2 Falcon  
3 —

### Scorpion Bowl

- A Fleet**  
1 Moose  
2 Wild Ride  
3 —

- B Fleet**  
1 Black Seal  
2 Dopodamani  
3 Agora

- C Fleet**  
1 Static  
2 Tonga  
3 JEF

- D Fleet**  
1 Mysterious Ways  
2 —  
3 —

- F Fleet**  
1 —  
2 —  
3 —

- G Fleet**  
1 Morris the Cat  
2 Falcon  
3 —

### Hitchcock Trophy

- A Fleet**  
1 Shamrock Sensation  
2 Moose  
3 Wild Ride

- B Fleet**  
1 Rocklt 2.0  
2 Dopodamani  
3 Wild Thing

- C Fleet**  
1 —  
2 —  
3 —

- D Fleet**  
1 Mysterious Ways  
2 Dea Salacia  
3 —

- F Fleet**  
1 —  
2 —  
3 —

- G Fleet**  
1 Cynosure  
2 Falcon  
3 Morris the Cat

### Chowder Cup

- A Fleet**  
1 —  
2 —  
3 —

- B Fleet**  
1 —  
2 —  
3 —

- C Fleet**  
1 —  
2 —  
3 —

- D Fleet**  
1 —  
2 —  
3 —

- F Fleet**  
1 —  
2 —  
3 —

- G Fleet**  
1 —  
2 —  
3 —

did not race

### Scituate Invitational

- A Fleet**  
1 Wild Ride  
2 —  
3 —

- B Fleet**  
1 Dopodamani  
2 Big Fish  
3 Cerberus

- C Fleet**  
1 Osprey  
2 Sea Wings  
3 Blue Skies

- D Fleet**  
1 —  
2 —  
3 —

- F Fleet**  
1 Greyhound  
2 Cara Mia  
3 —

- G Fleet**  
1 Virago  
2 —  
3 —

## GOVERNOR'S CUP

Awarded to the boat with the highest 4 race total points in these 5 weekend races: Solstice, Scorpion, Chowder, Hitchcock, and the Scituate Invitational

- A Fleet**  
1 Wild Ride  
2 Moose  
3 Pressure Drop

- B Fleet**  
1 Dopodamani  
2 Wild Thing  
3 Agora

- C Fleet**  
1 Static  
2 Tonga  
3 JEF

- D Fleet**  
1 Mysterious Ways  
2 Dea Salacia  
3 Gotta Jibboo

- F Fleet**  
1 Mashnee  
2 Greyhound  
3 Summerin

- G Fleet**  
1 Cynosure  
2 Falcon  
3 Morris the Cat



## More Awards...

### BENT RUDDER AWARD

The 2019 Award Recipient

Given to the skipper of the boat that pulls off the most embarrassing/boneheaded maneuver of the season.

Doug Ryan  
Wizard / J 80

### TOP CHEF AWARD

The 2019 Award Recipient

Given each year to the crew who, during their race committee duties, most impresses the PRO with creativity and execution of food and drink preparation.

Mike Feeley  
and the Crew members of  
Ladylove / J 109

### BEST RC AWARD

The 2019 Award Recipient  
is a tie this year:

Given each year to the crew who performs the duties of race committee to the best of their abilities and most impresses the PRO during the race.

Static / Evelyn 32-2  
Melody / Islander 36



## SOCIAL EVENTS

COME FOR THE RACES – STAY FOR THE FUN

### TWILIGHT RACES

Wednesday Nights

*Post-race activities:*

All racers are invited to join us at the 99 Restaurant, Route 3A in Hingham. Share your stories, good or bad, and camaraderie over food and drinks.

### HITCHCOCK TROPHY

Saturday, August 15

*Post-race activities:*

All Skippers and crew are invited to a cookout at Hingham Yacht Club. Awards will be presented for First, Second, and Third place finishers in each fleet. The Overall Winner will receive the **Ethan W. Hitchcock Trophy**.

✓ Free moorings are available at Hingham Y.C. to visiting boats

### CHOWDER CUP

Saturday, September 12

*Post-race activities:*

Celebrate the last Hingham Bay race of the season with some home made chowder at the Hingham Y.C. with cookout and desserts.

✓ Free moorings are available at Hingham Y.C. to visiting boats



## THE ANNUAL HINGHAM BAY RACING AWARDS PARTY

Trophies for the Hingham Bay races will be awarded at the annual party which is currently scheduled for some time in November 2020.

Details will be announced at the end of the 2020 sailing season.

# DJ STEVE K



## ROCKS YOUR WORLD!

djstevek@aol.com

617-773-4936



# The River Club

Where Dreams Come True

Weddings, Anniversaries, Bridal Showers, Birthdays, Rehearsal Dinners,  
Christmas Parties, Bar Mitzvah, Retirements, Christenings, Graduations, Proms, Etc.

781-545-1330

78 Border Street, Scituate, MA 02066



## Bert's Boat Yard, LLC

- Outside Storage
- Yard Services on Site
- Storage Discounts to all Yacht Club Members

781-331-8967

Weymouth Fore River  
69 Norton Street, Weymouth

- AWLGRIP REFINISHING EXPERTS
- COSMETIC & STRUCTURAL REPAIRS
- CUSTOM FABRICATION
- BOAT MAINTENANCE

*Custom*  
**FIBERGLASS**  
INC.

275 RIVER STREET, WEYMOUTH, MA 02191

781-337-0055 FAX 781-337-0355



We Are a Full Service Marina  
Offering On-Site Boat Services.

Marina Office  
Tern Harbor Marina

275 River Street, Weymouth, MA 02191  
P: 781-337-1964 F: 781-337-3718  
info@ternharbormarina.com

Sales Office  
Tern Harbor Boat Showroom  
326 Lincoln Street, Hingham, MA 02043  
P: 781-749-5511 F: 781-556-5266  
knoonan@ternharbormarina.com

ternharbormarina.com • facebook.com/TernHarborMarina

"Over 7235 Satisfied Customers since 2001"

# GOT PAVEMENT NEEDS?

## Installations & Maintenance

### Bob Brainard

577 Brockton Avenue, Abington, MA 02351  
Office: 781.878.2004 • Cell: 781.738.8206

IPAVEITALL@GMAIL.COM





## STEAMBOAT WHARF MARINA

Justin Gould / Andrew Spinale (Owners)

telephone: 781-925-0044 / VHF channel 7

info@steamboatwharfmarina.com • www.steamboatwharfmarina.com

Latitude: 42 16.196' N Longitude: 70 51.492' W

*Seasonal Boat Slips • Guest Dockage • Winter Storage  
Mechanical and Boat Yard Services  
Boat Hauling • Dock Construction*

*Electric and Water Service at our Guest Dock  
Ice • WIFI • Picnic Seating and Grilling*

*Easy walk to Nantasket Beach, restaurants, entertainment*



## Aquamarine Services

Andrew Spinale, USCG Licensed Captain

telephone: 781-925-3483

andy@aquamarineservices.net • www.aquamarineservices.net

*Mooring Sales - All mooring components made in USA  
Mushrooms, pyramids and granite blocks  
Mooring balls, pick-up buoys, custom-spliced pennants  
Chains, shackles and swivels*

*Dock Service and Installations • Winterization / Spring set-up  
Differential GPS positioning • Inspection and Repair*



# Ninety Nine

**You'll Always Come Back For More™**

## A Great Place to Meet After the Races!

The Ninety Nine Restaurant & Pub  
has been serving delicious, hearty  
meals since 1952.

Come and relax in our comfortable  
family atmosphere and enjoy huge  
portions of great food at a terrific  
price. Our friendly waitstaff proudly  
serves whatever you're  
in the mood for - steak, chicken,  
pasta, seafood, mouth watering  
appetizers or huge desserts.

Trust us. We've got just what  
you're looking for.

## HINGHAM

**428 Lincoln Street  
Route 3A**

**781.740.8599**

## Hours of Operation

**Sunday:  
11:30 AM - 10:30 pm**

**Monday - Thursday:  
11:30 AM - 10:30 pm**

**Friday - Saturday:  
11:30 AM - 12:00 am**

~ A Proud 2019 Sponsor of Hingham Bay Racing ~



# South Shore's Oldest Brokerage Company

---



Sales, service and thousands of new and used boats.

170 Shipyard Drive, Hingham Shipyard, Hingham, MA 02043  
Tel. (781) 749-8600 [easternyachtsales.com](http://easternyachtsales.com)

*~ A Proud 2020 Sponsor of Hingham Bay Racing ~*